

Stockholm University
Department of Statistics
Per G \ddot{u} sta Andersson

Econometrics I

WRITTEN EXAMINATION

Thursday January 5, 2017, 2 pm - 7 pm

Allowed tools: Pocket calculator

Passing rate: 50% of overall total, which is 100 points. For detailed grading criteria, see the course description.

The exam will be handed back on Monday January 16 at 1 pm in room B419.

For the maximum number of points on each problem detailed and clear solutions are required.

If not indicated otherwise, the disturbance terms u_i in the models are supposed to fulfill the usual requirements of normality, homoscedasticity and independence.

You may answer in Swedish.

1. (30p) The printout below shows the result for estimation of a linear regression model based on three X -variables.

- Write down the underlying linear model using appropriate notation.
- Perform the overall F-test, stating clearly the hypotheses and the test statistic with appropriate notation, for testing if we should keep at least one of the X -variables in the model. You will then confirm that the resulting value of the test statistic is 30.984 as in the printout. (Use a significance level of your own choice.)
- Compute \bar{R}^2 .
- Based on the results of the printout, which linear model would you finally choose?
- Using the model with three X -variables, test for autocorrelation (serial correlation). Use the significance level 5%.

Analysis of Variance

Source	DF	Sum of Squares	Mean Square	F Value	Prob > F
Model	3	399.45437	133.15146	30.984	0.0001
Error	9	38.67640	4.29738		
C Total	12	438.13077			

Root MSE 2.0730 R-square: 0.9117
 Dep Mean 29.03846
 C.V. 7.13865

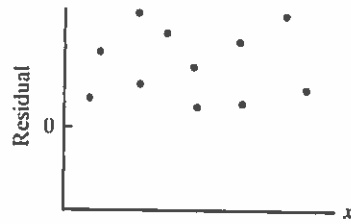
Parameter Estimates

Variable	DF	Parameter Estimate	Standard Error	T for H0: Parameter = 0	Prob > T
INTERCPT	1	39.157350	5.86705963	6.651	0.0001
X1	1	1.016100	0.19089520	5.323	0.0005
X2	1	-1.861649	0.26732550	-6.964	0.0001
X3	1	-0.342260	0.61705204	-0.556	0.5916

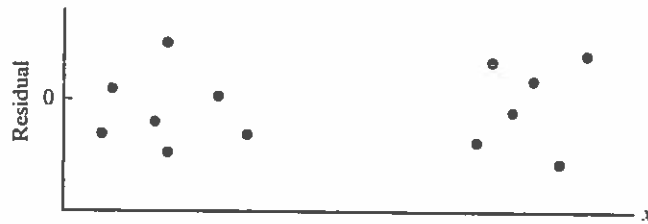
OBS	Y	PREDICTED	RESIDUAL	CLM_L	CLM_U	CLI_L	CLI_U
1	25.5	27.351	-1.851	24.150	30.552	21.673	33.029
2	31.2	32.262	-1.062	30.467	34.037	27.248	37.276
3	25.9	27.349	-1.449	24.275	30.423	21.742	32.957
4	36.4	38.309	-1.909	35.409	41.209	32.796	43.823
5	18.4	15.547	2.852	11.472	19.116	9.649	21.439
6	24.7	26.106	-1.393	23.769	28.452	20.465	31.350
7	25.4	28.252	-2.852	26.422	30.061	23.269	33.285
8	25.9	26.219	-0.319	24.020	28.423	21.041	31.402
9	32.0	33.082	-1.082	30.317	33.659	27.075	37.109
10	25.2	26.047	-0.847	24.502	27.632	21.123	31.015
11	39.7	37.252	2.447	34.292	40.209	31.706	42.791
12	35.7	32.487	3.213	29.143	35.601	26.745	38.230
13	26.5	28.202	-1.702	25.971	30.429	23.012	33.394

3. (20p)

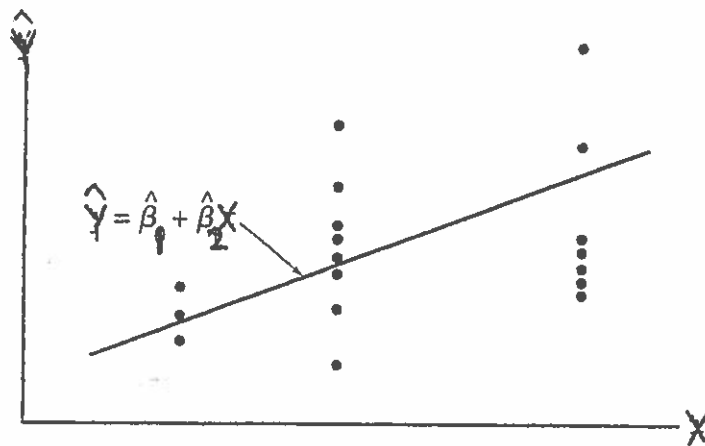
(a) Is it possible to get the following residual plot from a simple linear regression model? Why/why not?



(b) Would the following residual plot cause you to doubt that the underlying X, Y -relationship is linear. Why/why not?



(c) Which, if any, of the usual assumptions of the simple linear regression model appear to be violated in the following scatterplot?



2. (25p) The growth of the federal debt (Y) is one of the characterizing features of the economy in the USA during the 1980s. The increase over that decade appears to follow the exponential model

$$Y_i = \beta_1 e^{\beta_2 X_i} u_i,$$

where X_i = years after 1979.

Data:

Year	Years after 1979, X	Federal Debt (in trillions), Y
1980	1	0.908
1981	2	0.998
1982	3	1.142
1983	4	1.377
1984	5	1.572
1985	6	1.823
1986	7	2.125
1987	8	2.350
1988	9	2.602
1989	10	2.867
1990	11	3.233

- Transform the model into a linear model.
- Compute the OLS estimates of β_1 and β_2 , based on the linear model.
- Plot the data together with the fitted (estimated) curve.
- Using your results, what is the predicted value of Y for the year 1991?

Some computational help: $\sum_{i=1}^{11} \ln Y_i = 6.1985$, $\sum_{i=1}^{11} X_i \ln Y_i = 51.6005$.
(\ln symbolizing the natural logarithm.)

4. (25p) Consider the following expressions:

$$E(Y|X) = \frac{1}{a + bX}$$

$$E(Y|X) = \frac{X}{a + bX}$$

- (a) Derive linear regression models from the above nonlinear expressions. (The disturbance variables are allowed to simply be added at the end of the resulting expressions.)
- (b) Are the resulting linear models nested or non-nested? (Motivation of course needed.)
- (c) If we have data and apply these two different linear models, how would you compare them in order to decide which one to use?

(Even if you have not completed (a), you might be able to provide answers to (b) and (c).)

Formula sheet, Econometrics I, Fall 2016

Under the simple linear model $Y_i = \beta_1 + \beta_2 X_i + u_i$, where $u_i \sim N(0, \sigma^2)$ and given independent pairs of observations $(Y_1, X_1), \dots, (Y_n, X_n)$, the OLS (and ML) estimators are:

$$\begin{aligned}\hat{\beta}_1 &= \bar{Y} - \hat{\beta}_2 \bar{X} \\ \hat{\beta}_2 &= \frac{\sum (X_i - \bar{X})(Y_i - \bar{Y})}{\sum (X_i - \bar{X})^2} \\ \hat{\sigma}^2 &= \frac{RSS}{n-2} = \frac{\sum (Y_i - \hat{Y}_i)^2}{n-2}\end{aligned}$$

where $\hat{Y}_i = \hat{\beta}_1 + \hat{\beta}_2 X_i$ and where $E(\hat{\beta}_1) = \beta_1$, $E(\hat{\beta}_2) = \beta_2$ and $E(\hat{\sigma}^2) = \sigma^2$ and further

$$\begin{aligned}V(\hat{\beta}_1) &= \frac{\sum X_i^2}{n \sum (X_i - \bar{X})^2} \sigma^2 \\ V(\hat{\beta}_2) &= \frac{\sigma^2}{\sum (X_i - \bar{X})^2} \\ V(\hat{Y}_0) &= \sigma^2 \left(\frac{1}{n} + \frac{(X_0 - \bar{X})^2}{\sum (X_i - \bar{X})^2} \right) \\ V(Y_0 - \hat{Y}_0) &= \sigma^2 \left(1 + \frac{1}{n} + \frac{(X_0 - \bar{X})^2}{\sum (X_i - \bar{X})^2} \right)\end{aligned}$$

Distributional results:

$$\begin{aligned}\frac{\hat{\beta}_i - \beta_i}{se(\hat{\beta}_i)} &\sim t(n-2), \quad i = 1, 2 \\ \frac{\hat{\sigma}^2 (n-2)}{\sigma^2} &\sim \chi^2(n-2)\end{aligned}$$

Coefficient of determination:

$$r^2 = \frac{ESS}{TSS} = 1 - \frac{RSS}{TSS} = 1 - \frac{\sum (Y_i - \hat{Y}_i)^2}{\sum (Y_i - \bar{Y})^2}$$

Coefficient of correlation:

$$r = \frac{\sum (X_i - \bar{X})(Y_i - \bar{Y})}{\sqrt{\sum (X_i - \bar{X})^2 \sum (Y_i - \bar{Y})^2}}$$

where $r = \pm\sqrt{r^2}$

If we let $Y_i^* = w_1 Y_i$ and $X_i^* = w_2 X_i$, then

$$\hat{\beta}_1^* = w_1 \hat{\beta}_1, \quad \hat{\beta}_2^* = \left(\frac{w_1}{w_2}\right) \hat{\beta}_2, \quad \hat{\sigma}^{*2} = w_1^2 \hat{\sigma}^2$$

Under the multiple linear regression model $Y_i = \beta_1 + \beta_2 X_{2i} + \dots + \beta_k X_{ki} + u_i$, where $u_i \sim N(0, \sigma^2)$ and given independent vectors of observations $(Y_1, X_{21}, \dots, X_{k1}), \dots, (Y_n, X_{2n}, \dots, X_{kn})$, the following holds for the OLS (ML) estimators:

$$\hat{\sigma}^2 = \frac{RSS}{n-k} = \frac{\sum (Y_i - \hat{Y}_i)^2}{n-k}$$

$$\frac{\hat{\beta}_i - \beta_i}{se(\hat{\beta}_i)} \sim t(n-k), \quad i = 1, \dots, k$$

$$\frac{\hat{\sigma}^2 (n-k)}{\sigma^2} \sim \chi^2(n-k)$$

The multiple coefficient of determination:

$$R^2 = \frac{ESS}{TSS} = 1 - \frac{RSS}{TSS} = 1 - \frac{\sum (Y_i - \hat{Y}_i)^2}{\sum (Y_i - \bar{Y})^2}$$

Adjusted:

$$\bar{R}^2 = 1 - \frac{RSS/(n-k)}{TSS/(n-1)}$$

Testing $H_0: \beta_2 = \dots = \beta_k = 0$:

$$F = \frac{ESS/(k-1)}{RSS/(n-k)} = \frac{\sum (\hat{Y}_i - \bar{Y})^2 / (k-1)}{\sum (Y_i - \hat{Y}_i)^2 / (n-k)}$$

Comparing an "old" model with a "new" (larger):

$$F = \frac{(ESS_{new} - ESS_{old})/\text{number of new regressors}}{RSS_{new}/(n - \text{number of parameters in the new model})}$$

$$= \frac{(R_{new}^2 - R_{old}^2)/\text{number of new regressors}}{(1 - R_{new}^2)/(n - \text{number of parameters in the new model})}$$

Comparing an "unrestricted" model with a "restricted":

$$F = \frac{(RSS_R - RSS_{UR})/m}{RSS_{UR}/(n-k)} = \frac{(R_{UR}^2 - R_R^2)/m}{(1 - R_{UR}^2)/(n-k)}$$

where m is the number of linear constraints and k is the number of parameters in the unrestricted model.

Variance inflation factor:

$$VIF_j = \frac{1}{1 - R_j^2}$$

Auxiliary regression:

$$F_j = \frac{R_j^2/(k-2)}{(1 - R_j^2)/(n-k+1)}$$

where $R_j^2 = R^2$ in the regression of the remaining $(k-2)$ regressors.

White's test for heteroscedasticity:

$$n R^2 \overset{\text{appr}}{\sim} \chi^2 (df = \text{number of regressors in the auxiliary regression})$$

(Holds under H_0 : no heteroscedasticity.)

For R = number of runs, where $N = N_1 + N_2$ total number of observations:

$$E(R) = \frac{2N_1N_2}{N} + 1$$

$$V(R) = \frac{2N_1N_2(2N_1N_2 - N)}{N^2(N-1)}$$

The Durbin Watson d statistic:

$$d = \frac{\sum_{t=2}^n (\hat{u}_t - \hat{u}_{t-1})^2}{\sum_{t=1}^n \hat{u}_t^2}$$

Akaike's information criterion:

$$AIC = \frac{e^{2k/n} RSS}{n}$$

Schwartz's information criterion:

$$SIC = \frac{n^{k/n} RSS}{n}$$

Mallow's C_p criterion:

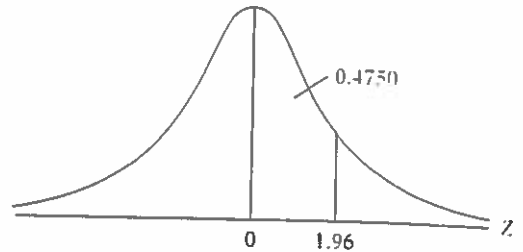
$$C_p = \frac{RSS_p}{\hat{\sigma}^2} - (n - 2p)$$

TABLE D.1
Areas Under the
Standardized Normal
Distribution

Example

$$\Pr(0 \leq Z \leq 1.96) = 0.4750$$

$$\Pr(Z \geq 1.96) = 0.5 - 0.4750 = 0.025$$



Z	.00	.01	.02	.03	.04	.05	.06	.07	.08	.09
0.0	.0000	.0040	.0080	.0120	.0160	.0199	.0239	.0279	.0319	.0359
0.1	.0398	.0438	.0478	.0517	.0557	.0596	.0636	.0675	.0714	.0753
0.2	.0793	.0832	.0871	.0910	.0948	.0987	.1026	.1064	.1103	.1141
0.3	.1179	.1217	.1255	.1293	.1331	.1368	.1406	.1443	.1480	.1517
0.4	.1554	.1591	.1628	.1664	.1700	.1736	.1772	.1808	.1844	.1879
0.5	.1915	.1950	.1985	.2019	.2054	.2088	.2123	.2157	.2190	.2224
0.6	.2257	.2291	.2324	.2357	.2389	.2422	.2454	.2486	.2517	.2549
0.7	.2580	.2611	.2642	.2673	.2704	.2734	.2764	.2794	.2823	.2852
0.8	.2881	.2910	.2939	.2967	.2995	.3023	.3051	.3078	.3106	.3133
0.9	.3159	.3186	.3212	.3238	.3264	.3289	.3315	.3340	.3365	.3389
1.0	.3413	.3438	.3461	.3485	.3508	.3531	.3554	.3577	.3599	.3621
1.1	.3643	.3665	.3686	.3708	.3729	.3749	.3770	.3790	.3810	.3830
1.2	.3849	.3869	.3888	.3907	.3925	.3944	.3962	.3980	.3997	.4015
1.3	.4032	.4049	.4066	.4082	.4099	.4115	.4131	.4147	.4162	.4177
1.4	.4192	.4207	.4222	.4236	.4251	.4265	.4279	.4292	.4306	.4319
1.5	.4332	.4345	.4357	.4370	.4382	.4394	.4406	.4418	.4429	.4441
1.6	.4452	.4463	.4474	.4484	.4495	.4505	.4515	.4525	.4535	.4545
1.7	.4454	.4564	.4573	.4582	.4591	.4599	.4608	.4616	.4625	.4633
1.8	.4641	.4649	.4656	.4664	.4671	.4678	.4686	.4693	.4699	.4706
1.9	.4713	.4719	.4726	.4732	.4738	.4744	.4750	.4756	.4761	.4767
2.0	.4772	.4778	.4783	.4788	.4793	.4798	.4803	.4808	.4812	.4817
2.1	.4821	.4826	.4830	.4834	.4838	.4842	.4846	.4850	.4854	.4857
2.2	.4861	.4864	.4868	.4871	.4875	.4878	.4881	.4884	.4887	.4890
2.3	.4893	.4896	.4898	.4901	.4904	.4906	.4909	.4911	.4913	.4916
2.4	.4918	.4920	.4922	.4925	.4927	.4929	.4931	.4932	.4934	.4936
2.5	.4938	.4940	.4941	.4943	.4945	.4946	.4948	.4949	.4951	.4952
2.6	.4953	.4955	.4956	.4957	.4959	.4960	.4961	.4962	.4963	.4964
2.7	.4965	.4966	.4967	.4968	.4969	.4970	.4971	.4972	.4973	.4974
2.8	.4974	.4975	.4976	.4977	.4977	.4978	.4979	.4979	.4980	.4981
2.9	.4981	.4982	.4982	.4983	.4984	.4984	.4985	.4985	.4986	.4986
3.0	.4987	.4987	.4987	.4988	.4988	.4989	.4989	.4989	.4990	.4990

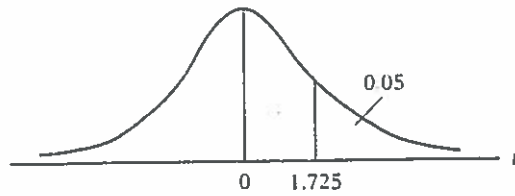
Note: This table gives the area in the right-hand tail of the distribution (i.e., $Z \geq 0$). But since the normal distribution is symmetrical about $Z = 0$, the area in the left-hand tail is the same as the area in the corresponding right-hand tail. For example, $\Pr(-1.96 \leq Z \leq 0) = 0.4750$. Therefore, $\Pr(-1.96 \leq Z \leq 1.96) = 2(0.4750) = 0.95$.

TABLE D 2
Percentage Points of
the *t* Distribution

Source: From F. S. Pearson and H. O. Hartley, eds., *Biometrika Tables for Statisticians*, vol. 1, 3d ed., table 12, Cambridge University Press, New York, 1966. Reproduced by permission of the editors and trustees of *Biometrika*.

Example

$\Pr(t > 2.086) = 0.025$
 $\Pr(t > 1.725) = 0.05$ for $df = 20$
 $\Pr(|t| > 1.725) = 0.10$



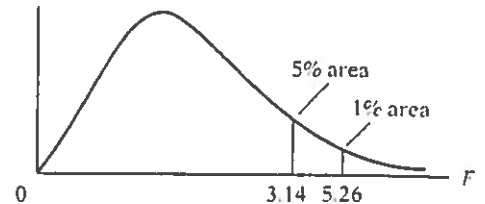
Pr df	0.25 0.50	0.10 0.20	0.05 0.10	0.025 0.05	0.01 0.02	0.005 0.010	0.001 0.002
1	1.000	3.078	6.314	12.706	31.821	63.657	318.31
2	0.816	1.886	2.920	4.303	6.965	9.925	22.327
3	0.765	1.638	2.353	3.182	4.541	5.841	10.214
4	0.741	1.533	2.132	2.776	3.747	4.604	7.173
5	0.727	1.476	2.015	2.571	3.365	4.032	5.893
6	0.718	1.440	1.943	2.447	3.143	3.707	5.208
7	0.711	1.415	1.895	2.365	2.998	3.499	4.785
8	0.706	1.397	1.860	2.306	2.896	3.355	4.501
9	0.703	1.383	1.833	2.262	2.821	3.250	4.297
10	0.700	1.372	1.812	2.228	2.764	3.169	4.144
11	0.697	1.363	1.796	2.201	2.718	3.106	4.025
12	0.695	1.356	1.782	2.179	2.681	3.055	3.930
13	0.694	1.350	1.771	2.160	2.650	3.012	3.852
14	0.692	1.345	1.761	2.145	2.624	2.977	3.787
15	0.691	1.341	1.753	2.131	2.602	2.947	3.733
16	0.690	1.337	1.746	2.120	2.583	2.921	3.686
17	0.689	1.333	1.740	2.110	2.567	2.898	3.646
18	0.688	1.330	1.734	2.101	2.552	2.878	3.610
19	0.688	1.328	1.729	2.093	2.539	2.861	3.579
20	0.687	1.325	1.725	2.086	2.528	2.845	3.552
21	0.686	1.323	1.721	2.080	2.518	2.831	3.527
22	0.686	1.321	1.717	2.074	2.508	2.819	3.505
23	0.685	1.319	1.714	2.069	2.500	2.807	3.485
24	0.685	1.318	1.711	2.064	2.492	2.797	3.467
25	0.684	1.316	1.708	2.060	2.485	2.787	3.450
26	0.684	1.315	1.706	2.056	2.479	2.779	3.435
27	0.684	1.314	1.703	2.052	2.473	2.771	3.421
28	0.683	1.313	1.701	2.048	2.467	2.763	3.408
29	0.683	1.311	1.699	2.045	2.462	2.756	3.396
30	0.683	1.310	1.697	2.042	2.457	2.750	3.385
40	0.681	1.303	1.684	2.021	2.423	2.704	3.307
60	0.679	1.296	1.671	2.000	2.390	2.660	3.232
120	0.677	1.289	1.658	1.980	2.358	2.617	3.160
∞	0.674	1.282	1.645	1.960	2.326	2.576	3.090

Note: The smaller probability shown at the head of each column is the area in one tail; the larger probability is the area in both tails.

TABLE D.3 Upper Percentage Points of the F Distribution

Example

$\Pr(F > 1.59) = 0.25$
 $\Pr(F > 2.42) = 0.10$ for $df N_1 = 10$
 $\Pr(F > 3.14) = 0.05$ and $N_2 = 9$
 $\Pr(F > 5.26) = 0.01$



df for denominator N_2	Pr	df for numerator N_1											
		1	2	3	4	5	6	7	8	9	10	11	12
1	.25	5.83	7.50	8.20	8.58	8.82	8.98	9.10	9.19	9.26	9.32	9.36	9.41
	.10	39.9	49.5	53.6	55.8	57.2	58.2	58.9	59.4	59.9	60.2	60.5	60.7
	.05	161	200	216	225	230	234	237	239	241	242	243	244
	.01												
2	.25	2.57	3.00	3.15	3.23	3.28	3.31	3.34	3.35	3.37	3.38	3.39	3.39
	.10	8.53	9.00	9.16	9.24	9.29	9.33	9.35	9.37	9.38	9.39	9.40	9.41
	.05	18.5	19.0	19.2	19.2	19.3	19.3	19.4	19.4	19.4	19.4	19.4	19.4
	.01	98.5	99.0	99.2	99.2	99.3	99.3	99.4	99.4	99.4	99.4	99.4	99.4
3	.25	2.02	2.28	2.36	2.39	2.41	2.42	2.43	2.44	2.44	2.44	2.45	2.45
	.10	5.54	5.46	5.39	5.34	5.31	5.28	5.27	5.25	5.24	5.23	5.22	5.22
	.05	10.1	9.55	9.28	9.12	9.01	8.94	8.89	8.85	8.81	8.79	8.76	8.74
	.01	34.1	30.8	29.5	28.7	28.2	27.9	27.7	27.5	27.3	27.2	27.1	27.1
4	.25	1.81	2.00	2.05	2.06	2.07	2.08	2.08	2.08	2.08	2.08	2.08	2.08
	.10	4.54	4.32	4.19	4.11	4.05	4.01	3.98	3.95	3.94	3.92	3.91	3.90
	.05	7.71	6.94	6.59	6.39	6.26	6.16	6.09	6.04	6.00	5.96	5.94	5.91
	.01	21.2	18.0	16.7	16.0	15.5	15.2	15.0	14.8	14.7	14.5	14.4	14.4
5	.25	1.69	1.85	1.88	1.89	1.89	1.89	1.89	1.89	1.89	1.89	1.89	1.89
	.10	4.06	3.78	3.62	3.52	3.45	3.40	3.37	3.34	3.32	3.30	3.28	3.27
	.05	6.61	5.79	5.41	5.19	5.05	4.95	4.88	4.82	4.77	4.74	4.71	4.68
	.01	16.3	13.3	12.1	11.4	11.0	10.7	10.5	10.3	10.2	10.1	9.96	9.89
6	.25	1.62	1.76	1.78	1.79	1.79	1.78	1.78	1.78	1.77	1.77	1.77	1.77
	.10	3.78	3.46	3.29	3.18	3.11	3.05	3.01	2.98	2.96	2.94	2.92	2.90
	.05	5.99	5.14	4.76	4.53	4.39	4.28	4.21	4.15	4.10	4.06	4.03	4.00
	.01	13.7	10.9	9.78	9.15	8.75	8.47	8.26	8.10	7.98	7.87	7.79	7.72
7	.25	1.57	1.70	1.72	1.72	1.71	1.71	1.70	1.70	1.69	1.69	1.69	1.68
	.10	3.59	3.26	3.07	2.96	2.88	2.83	2.78	2.75	2.72	2.70	2.68	2.67
	.05	5.59	4.74	4.35	4.12	3.97	3.87	3.79	3.73	3.68	3.64	3.60	3.57
	.01	12.2	9.55	8.45	7.85	7.46	7.19	6.99	6.84	6.72	6.62	6.54	6.47
8	.25	1.54	1.66	1.67	1.66	1.66	1.65	1.64	1.64	1.63	1.63	1.63	1.62
	.10	3.46	3.11	2.92	2.81	2.73	2.67	2.62	2.59	2.56	2.54	2.52	2.50
	.05	5.32	4.46	4.07	3.84	3.69	3.58	3.50	3.44	3.39	3.35	3.31	3.28
	.01	11.3	8.65	7.59	7.01	6.63	6.37	6.18	6.03	5.91	5.81	5.73	5.67
9	.25	1.51	1.62	1.63	1.63	1.62	1.61	1.60	1.60	1.59	1.59	1.58	1.58
	.10	3.36	3.01	2.81	2.69	2.61	2.55	2.51	2.47	2.44	2.42	2.40	2.38
	.05	5.12	4.26	3.86	3.63	3.48	3.37	3.29	3.23	3.18	3.14	3.10	3.07
	.01	10.6	8.02	6.99	6.42	6.06	5.80	5.61	5.47	5.35	5.26	5.18	5.11

Source: From E. S. Pearson and H. O. Hartley, eds., *Biometrika Tables for Statisticians*, vol. 1, 3d ed., table 18, Cambridge University Press, New York, 1966. Reproduced by permission of the editors and trustees of *Biometrika*.

F-table continued

df for numerator N_1													df for denominator N_2
15	20	24	30	40	50	60	100	120	200	500	∞	Pr	
9.49	9.58	9.63	9.67	9.71	9.74	9.76	9.78	9.80	9.82	9.84	9.85	.25	1
61.2	61.7	62.0	62.3	62.5	62.7	62.8	63.0	63.1	63.2	63.3	63.3	.10	
246	248	249	250	251	252	252	253	253	254	254	254	.05	
3.41	3.43	3.43	3.44	3.45	3.45	3.46	3.47	3.47	3.48	3.48	3.48	.25	2
9.42	9.44	9.45	9.46	9.47	9.47	9.47	9.48	9.48	9.49	9.49	9.49	.10	
19.4	19.4	19.5	19.5	19.5	19.5	19.5	19.5	19.5	19.5	19.5	19.5	.05	
99.4	99.4	99.5	99.5	99.5	99.5	99.5	99.5	99.5	99.5	99.5	99.5	.01	
2.46	2.46	2.46	2.47	2.47	2.47	2.47	2.47	2.47	2.47	2.47	2.47	.25	3
5.20	5.18	5.18	5.17	5.16	5.15	5.15	5.14	5.14	5.14	5.14	5.13	.10	
8.70	8.66	8.64	8.62	8.59	8.58	8.57	8.55	8.55	8.54	8.53	8.53	.05	
26.9	26.7	26.6	26.5	26.4	26.4	26.3	26.2	26.2	26.2	26.1	26.1	.01	
2.08	2.08	2.08	2.08	2.08	2.08	2.08	2.08	2.08	2.08	2.08	2.08	.25	4
3.87	3.84	3.83	3.82	3.80	3.80	3.79	3.78	3.78	3.77	3.76	3.76	.10	
5.86	5.80	5.77	5.75	5.72	5.70	5.69	5.66	5.66	5.65	5.64	5.63	.05	
14.2	14.0	13.9	13.8	13.7	13.7	13.7	13.6	13.6	13.5	13.5	13.5	.01	
1.89	1.88	1.88	1.88	1.88	1.88	1.87	1.87	1.87	1.87	1.87	1.87	.25	5
3.24	3.21	3.19	3.17	3.16	3.15	3.14	3.13	3.12	3.12	3.11	3.10	.10	
4.62	4.56	4.53	4.50	4.46	4.44	4.43	4.41	4.40	4.39	4.37	4.36	.05	
9.72	9.55	9.47	9.38	9.29	9.24	9.20	9.13	9.11	9.08	9.04	9.02	.01	
1.76	1.76	1.75	1.75	1.75	1.75	1.74	1.74	1.74	1.74	1.74	1.74	.25	6
2.87	2.84	2.82	2.80	2.78	2.77	2.76	2.75	2.74	2.73	2.73	2.72	.10	
3.94	3.87	3.84	3.81	3.77	3.75	3.74	3.71	3.70	3.69	3.68	3.67	.05	
7.56	7.40	7.31	7.23	7.14	7.09	7.06	6.99	6.97	6.93	6.90	6.88	.01	
1.68	1.67	1.67	1.66	1.66	1.66	1.65	1.65	1.65	1.65	1.65	1.65	.25	7
2.63	2.59	2.58	2.56	2.54	2.52	2.51	2.50	2.49	2.48	2.48	2.47	.10	
3.51	3.44	3.41	3.38	3.34	3.32	3.30	3.27	3.27	3.25	3.24	3.23	.05	
6.31	6.16	6.07	5.99	5.91	5.86	5.82	5.75	5.74	5.70	5.67	5.65	.01	
1.62	1.61	1.60	1.60	1.59	1.59	1.59	1.58	1.58	1.58	1.58	1.58	.25	8
2.46	2.42	2.40	2.38	2.36	2.35	2.34	2.32	2.32	2.31	2.30	2.29	.10	
3.22	3.15	3.12	3.08	3.04	3.02	3.01	2.97	2.97	2.95	2.94	2.93	.05	
5.52	5.36	5.28	5.20	5.12	5.07	5.03	4.96	4.95	4.91	4.88	4.86	.01	
1.57	1.56	1.56	1.55	1.55	1.54	1.54	1.53	1.53	1.53	1.53	1.53	.25	9
2.34	2.30	2.28	2.25	2.23	2.22	2.21	2.19	2.18	2.17	2.17	2.16	.10	
3.01	2.94	2.90	2.86	2.83	2.80	2.79	2.76	2.75	2.73	2.72	2.71	.05	
4.96	4.81	4.73	4.65	4.57	4.52	4.48	4.42	4.40	4.36	4.33	4.31	.01	

(Continued)

TABLE D.3 Upper Percentage Points of the *F* Distribution (Continued)

df for denominator N_2	df for numerator N_1												
	Pr	1	2	3	4	5	6	7	8	9	10	11	12
10	.25	1.49	1.60	1.60	1.59	1.59	1.58	1.57	1.56	1.56	1.55	1.55	1.54
	.10	3.29	2.92	2.73	2.61	2.52	2.46	2.41	2.38	2.35	2.32	2.30	2.28
	.05	4.96	4.10	3.71	3.48	3.33	3.22	3.14	3.07	3.02	2.98	2.94	2.91
	.01	10.0	7.56	6.55	5.99	5.64	5.39	5.20	5.06	4.94	4.85	4.77	4.71
11	.25	1.47	1.58	1.58	1.57	1.56	1.55	1.54	1.53	1.53	1.52	1.52	1.51
	.10	3.23	2.86	2.66	2.54	2.45	2.39	2.34	2.30	2.27	2.25	2.23	2.21
	.05	4.84	3.98	3.59	3.36	3.20	3.09	3.01	2.95	2.90	2.85	2.82	2.79
	.01	9.65	7.21	6.22	5.67	5.32	5.07	4.89	4.74	4.63	4.54	4.46	4.40
12	.25	1.46	1.56	1.56	1.55	1.54	1.53	1.52	1.51	1.51	1.50	1.50	1.49
	.10	3.18	2.81	2.61	2.48	2.39	2.33	2.28	2.24	2.21	2.19	2.17	2.15
	.05	4.75	3.89	3.49	3.26	3.11	3.00	2.91	2.85	2.80	2.75	2.72	2.69
	.01	9.33	6.93	5.95	5.41	5.06	4.82	4.64	4.50	4.39	4.30	4.22	4.16
13	.25	1.45	1.55	1.55	1.53	1.52	1.51	1.50	1.49	1.49	1.48	1.47	1.47
	.10	3.14	2.76	2.56	2.43	2.35	2.28	2.23	2.20	2.16	2.14	2.12	2.10
	.05	4.67	3.81	3.41	3.18	3.03	2.92	2.83	2.77	2.71	2.67	2.63	2.60
	.01	9.07	6.70	5.74	5.21	4.86	4.62	4.44	4.30	4.19	4.10	4.02	3.96
14	.25	1.44	1.53	1.53	1.52	1.51	1.50	1.49	1.48	1.47	1.46	1.46	1.45
	.10	3.10	2.73	2.52	2.39	2.31	2.24	2.19	2.15	2.12	2.10	2.08	2.05
	.05	4.60	3.74	3.34	3.11	2.96	2.85	2.76	2.70	2.65	2.60	2.57	2.53
	.01	8.86	6.51	5.56	5.04	4.69	4.46	4.28	4.14	4.03	3.94	3.86	3.80
15	.25	1.43	1.52	1.52	1.51	1.49	1.48	1.47	1.46	1.46	1.45	1.44	1.44
	.10	3.07	2.70	2.49	2.36	2.27	2.21	2.16	2.12	2.09	2.06	2.04	2.02
	.05	4.54	3.68	3.29	3.06	2.90	2.79	2.71	2.64	2.59	2.54	2.51	2.48
	.01	8.68	6.36	5.42	4.89	4.56	4.32	4.14	4.00	3.89	3.80	3.73	3.67
16	.25	1.42	1.51	1.51	1.50	1.48	1.47	1.46	1.45	1.44	1.44	1.44	1.43
	.10	3.05	2.67	2.46	2.33	2.24	2.18	2.13	2.09	2.06	2.03	2.01	1.99
	.05	4.49	3.63	3.24	3.01	2.85	2.74	2.66	2.59	2.54	2.49	2.46	2.42
	.01	8.53	6.23	5.29	4.77	4.44	4.20	4.03	3.89	3.78	3.69	3.62	3.55
17	.25	1.42	1.51	1.50	1.49	1.47	1.46	1.45	1.44	1.43	1.43	1.42	1.41
	.10	3.03	2.64	2.44	2.31	2.22	2.15	2.10	2.06	2.03	2.00	1.98	1.96
	.05	4.45	3.59	3.20	2.96	2.81	2.70	2.61	2.55	2.49	2.45	2.41	2.38
	.01	8.40	6.11	5.18	4.67	4.34	4.10	3.93	3.79	3.68	3.59	3.52	3.46
18	.25	1.41	1.50	1.49	1.48	1.46	1.45	1.44	1.43	1.42	1.42	1.41	1.40
	.10	3.01	2.62	2.42	2.29	2.20	2.13	2.08	2.04	2.00	1.98	1.96	1.93
	.05	4.41	3.55	3.16	2.93	2.77	2.66	2.58	2.51	2.46	2.41	2.37	2.34
	.01	8.29	6.01	5.09	4.58	4.25	4.01	3.84	3.71	3.60	3.51	3.43	3.37
19	.25	1.41	1.49	1.49	1.47	1.46	1.44	1.43	1.42	1.41	1.41	1.40	1.40
	.10	2.99	2.61	2.40	2.27	2.18	2.11	2.06	2.02	1.98	1.96	1.94	1.91
	.05	4.38	3.52	3.13	2.90	2.74	2.63	2.54	2.48	2.42	2.38	2.34	2.31
	.01	8.18	5.93	5.01	4.50	4.17	3.94	3.77	3.63	3.52	3.43	3.36	3.30
20	.25	1.40	1.49	1.48	1.46	1.45	1.44	1.43	1.42	1.41	1.40	1.39	1.39
	.10	2.97	2.59	2.38	2.25	2.16	2.09	2.04	2.00	1.96	1.94	1.92	1.89
	.05	4.35	3.49	3.10	2.87	2.71	2.60	2.51	2.45	2.39	2.35	2.31	2.28
	.01	8.10	5.85	4.94	4.43	4.10	3.87	3.70	3.56	3.46	3.37	3.29	3.23

F-table (continued)

df for numerator N_1													df for denominator N_2
15	20	24	30	40	50	60	100	120	200	500	∞	Pr	
1.53	1.52	1.52	1.51	1.51	1.50	1.50	1.49	1.49	1.49	1.48	1.48	.25	10
2.24	2.20	2.18	2.16	2.13	2.12	2.11	2.09	2.08	2.07	2.06	2.06	.10	
2.85	2.77	2.74	2.70	2.66	2.64	2.62	2.59	2.58	2.56	2.55	2.54	.05	
4.56	4.41	4.33	4.25	4.17	4.12	4.08	4.01	4.00	3.96	3.93	3.91	.01	11
1.50	1.49	1.49	1.48	1.47	1.47	1.47	1.46	1.46	1.46	1.45	1.45	.25	
2.17	2.12	2.10	2.08	2.05	2.04	2.03	2.00	2.00	1.99	1.98	1.97	.10	
2.72	2.65	2.61	2.57	2.53	2.51	2.49	2.46	2.45	2.43	2.42	2.40	.05	
4.25	4.10	4.02	3.94	3.86	3.81	3.78	3.71	3.69	3.66	3.62	3.60	.01	12
1.48	1.47	1.46	1.45	1.45	1.44	1.44	1.43	1.43	1.43	1.42	1.42	.25	
2.10	2.06	2.04	2.01	1.99	1.97	1.96	1.94	1.93	1.92	1.91	1.90	.10	
2.62	2.54	2.51	2.47	2.43	2.40	2.38	2.35	2.34	2.32	2.31	2.30	.05	
4.01	3.86	3.78	3.70	3.62	3.57	3.54	3.47	3.45	3.41	3.38	3.36	.01	13
1.46	1.45	1.44	1.43	1.42	1.42	1.42	1.41	1.41	1.40	1.40	1.40	.25	
2.05	2.01	1.98	1.96	1.93	1.92	1.90	1.88	1.88	1.86	1.85	1.85	.10	
2.53	2.46	2.42	2.38	2.34	2.31	2.30	2.26	2.25	2.23	2.22	2.21	.05	
3.82	3.66	3.59	3.51	3.43	3.38	3.34	3.27	3.25	3.22	3.19	3.17	.01	14
1.44	1.43	1.42	1.41	1.41	1.40	1.40	1.39	1.39	1.39	1.38	1.38	.25	
2.01	1.96	1.94	1.91	1.89	1.87	1.86	1.83	1.83	1.82	1.80	1.80	.10	
2.46	2.39	2.35	2.31	2.27	2.24	2.22	2.19	2.18	2.16	2.14	2.13	.05	
3.66	3.51	3.43	3.35	3.27	3.22	3.18	3.11	3.09	3.06	3.03	3.00	.01	15
1.43	1.41	1.41	1.40	1.39	1.39	1.38	1.38	1.37	1.37	1.36	1.36	.25	
1.97	1.92	1.90	1.87	1.85	1.83	1.82	1.79	1.79	1.77	1.76	1.76	.10	
2.40	2.33	2.29	2.25	2.20	2.18	2.16	2.12	2.11	2.10	2.08	2.07	.05	
3.52	3.37	3.29	3.21	3.13	3.08	3.05	2.98	2.96	2.92	2.89	2.87	.01	16
1.41	1.40	1.39	1.38	1.37	1.37	1.36	1.36	1.35	1.35	1.34	1.34	.25	
1.94	1.89	1.87	1.84	1.81	1.79	1.78	1.76	1.75	1.74	1.73	1.72	.10	
2.35	2.28	2.24	2.19	2.15	2.12	2.11	2.07	2.06	2.04	2.02	2.01	.05	
3.41	3.26	3.18	3.10	3.02	2.97	2.93	2.86	2.84	2.81	2.78	2.75	.01	17
1.40	1.39	1.38	1.37	1.36	1.35	1.35	1.34	1.34	1.34	1.33	1.33	.25	
1.91	1.86	1.84	1.81	1.78	1.76	1.75	1.73	1.72	1.71	1.69	1.69	.10	
2.31	2.23	2.19	2.15	2.10	2.08	2.06	2.02	2.01	1.99	1.97	1.96	.05	
3.31	3.16	3.08	3.00	2.92	2.87	2.83	2.76	2.75	2.71	2.68	2.65	.01	18
1.39	1.38	1.37	1.36	1.35	1.34	1.34	1.33	1.33	1.32	1.32	1.32	.25	
1.89	1.84	1.81	1.78	1.75	1.74	1.72	1.70	1.69	1.68	1.67	1.66	.10	
2.27	2.19	2.15	2.11	2.06	2.04	2.02	1.98	1.97	1.95	1.93	1.92	.05	
3.23	3.08	3.00	2.92	2.84	2.78	2.75	2.68	2.66	2.62	2.59	2.57	.01	19
1.38	1.37	1.36	1.35	1.34	1.33	1.33	1.32	1.32	1.31	1.31	1.30	.25	
1.86	1.81	1.79	1.76	1.73	1.71	1.70	1.67	1.67	1.65	1.64	1.63	.10	
2.23	2.16	2.11	2.07	2.03	2.00	1.98	1.94	1.93	1.91	1.89	1.88	.05	
3.15	3.00	2.92	2.84	2.76	2.71	2.67	2.60	2.58	2.55	2.51	2.49	.01	20
1.37	1.36	1.35	1.34	1.33	1.33	1.32	1.31	1.31	1.30	1.30	1.29	.25	
1.84	1.79	1.77	1.74	1.71	1.69	1.68	1.65	1.64	1.63	1.62	1.61	.10	
2.20	2.12	2.08	2.04	1.99	1.97	1.95	1.91	1.90	1.88	1.86	1.84	.05	
3.09	2.94	2.86	2.78	2.69	2.64	2.61	2.54	2.52	2.48	2.44	2.42	.01	

(Continues)

TABLE D.3 Upper Percentage Points of the F Distribution (Continued)

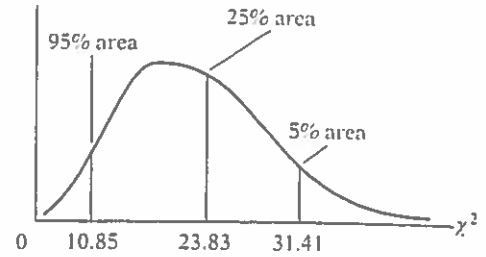
df for denominator N_2	df for numerator N_1												
	Pr	1	2	3	4	5	6	7	8	9	10	11	12
22	.25	1.40	1.48	1.47	1.45	1.44	1.42	1.41	1.40	1.39	1.39	1.38	1.37
	.10	2.95	2.56	2.35	2.22	2.13	2.06	2.01	1.97	1.93	1.90	1.88	1.86
	.05	4.30	3.44	3.05	2.82	2.66	2.55	2.46	2.40	2.34	2.30	2.26	2.23
	.01	7.95	5.72	4.82	4.31	3.99	3.76	3.59	3.45	3.35	3.26	3.18	3.12
24	.25	1.39	1.47	1.46	1.44	1.43	1.41	1.40	1.39	1.38	1.38	1.37	1.36
	.10	2.93	2.54	2.33	2.19	2.10	2.04	1.98	1.94	1.91	1.88	1.85	1.83
	.05	4.26	3.40	3.01	2.78	2.62	2.51	2.42	2.36	2.30	2.25	2.21	2.18
	.01	7.82	5.61	4.72	4.22	3.90	3.67	3.50	3.36	3.26	3.17	3.09	3.03
26	.25	1.38	1.46	1.45	1.44	1.42	1.41	1.39	1.38	1.37	1.37	1.36	1.35
	.10	2.91	2.52	2.31	2.17	2.08	2.01	1.96	1.92	1.88	1.86	1.84	1.81
	.05	4.23	3.37	2.98	2.74	2.59	2.47	2.39	2.32	2.27	2.22	2.18	2.15
	.01	7.72	5.53	4.64	4.14	3.82	3.59	3.42	3.29	3.18	3.09	3.02	2.96
28	.25	1.38	1.46	1.45	1.43	1.41	1.40	1.39	1.38	1.37	1.36	1.35	1.34
	.10	2.89	2.50	2.29	2.16	2.06	2.00	1.94	1.90	1.87	1.84	1.81	1.79
	.05	4.20	3.34	2.95	2.71	2.56	2.45	2.36	2.29	2.24	2.19	2.15	2.12
	.01	7.64	5.45	4.57	4.07	3.75	3.53	3.36	3.23	3.12	3.03	2.96	2.90
30	.25	1.38	1.45	1.44	1.42	1.41	1.39	1.38	1.37	1.36	1.35	1.35	1.34
	.10	2.88	2.49	2.28	2.14	2.05	1.98	1.93	1.88	1.85	1.82	1.79	1.77
	.05	4.17	3.32	2.92	2.69	2.53	2.42	2.33	2.27	2.21	2.16	2.13	2.09
	.01	7.56	5.39	4.51	4.02	3.70	3.47	3.30	3.17	3.07	2.98	2.91	2.84
40	.25	1.36	1.44	1.42	1.40	1.39	1.37	1.36	1.35	1.34	1.33	1.32	1.31
	.10	2.84	2.44	2.23	2.09	2.00	1.93	1.87	1.83	1.79	1.76	1.73	1.71
	.05	4.08	3.23	2.84	2.61	2.45	2.34	2.25	2.18	2.12	2.08	2.04	2.00
	.01	7.31	5.18	4.31	3.83	3.51	3.29	3.12	2.99	2.89	2.80	2.73	2.66
60	.25	1.35	1.42	1.41	1.38	1.37	1.35	1.33	1.32	1.31	1.30	1.29	1.29
	.10	2.79	2.39	2.18	2.04	1.95	1.87	1.82	1.77	1.74	1.71	1.68	1.66
	.05	4.00	3.15	2.76	2.53	2.37	2.25	2.17	2.10	2.04	1.99	1.95	1.92
	.01	7.08	4.98	4.13	3.65	3.34	3.12	2.95	2.82	2.72	2.63	2.56	2.50
120	.25	1.34	1.40	1.39	1.37	1.35	1.33	1.31	1.30	1.29	1.28	1.27	1.26
	.10	2.75	2.35	2.13	1.99	1.90	1.82	1.77	1.72	1.68	1.65	1.62	1.60
	.05	3.92	3.07	2.68	2.45	2.29	2.17	2.09	2.02	1.96	1.91	1.87	1.83
	.01	6.85	4.79	3.95	3.48	3.17	2.96	2.79	2.66	2.56	2.47	2.40	2.34
200	.25	1.33	1.39	1.38	1.36	1.34	1.32	1.31	1.29	1.28	1.27	1.26	1.25
	.10	2.73	2.33	2.11	1.97	1.88	1.80	1.75	1.70	1.66	1.63	1.60	1.57
	.05	3.89	3.04	2.65	2.42	2.26	2.14	2.06	1.98	1.93	1.88	1.84	1.80
	.01	6.76	4.71	3.88	3.41	3.11	2.89	2.73	2.60	2.50	2.41	2.34	2.27
∞	.25	1.32	1.39	1.37	1.35	1.33	1.31	1.29	1.28	1.27	1.25	1.24	1.24
	.10	2.71	2.30	2.08	1.94	1.85	1.77	1.72	1.67	1.63	1.60	1.57	1.55
	.05	3.84	3.00	2.60	2.37	2.21	2.10	2.01	1.94	1.88	1.83	1.79	1.75
	.01	6.63	4.61	3.78	3.32	3.02	2.80	2.64	2.51	2.41	2.32	2.25	2.18

TABLE D.4
Upper Percentage
Points of the χ^2
Distribution

Example

- $\Pr(\chi^2 > 10.85) = 0.95$
- $\Pr(\chi^2 > 23.83) = 0.25$
- $\Pr(\chi^2 > 31.41) = 0.05$

for $df = 20$



Degrees of freedom	.995	.990	.975	.950	.900
1	392704×10^{-10}	157088×10^{-9}	982069×10^{-9}	393214×10^{-8}	.0157908
2	.0100251	.0201007	.0506356	.102587	.210720
3	.0717212	.114832	.215795	.351846	.584375
4	.206990	.297110	.484419	.710721	1.063623
5	.411740	.554300	.831211	1.145476	1.61031
6	.675727	.872085	1.237347	1.63539	2.20413
7	.989265	1.239043	1.68987	2.16735	2.83311
8	1.344419	1.646482	2.17973	2.73264	3.48954
9	1.734926	2.087912	2.70039	3.32511	4.16816
10	2.15585	2.55821	3.24697	3.94030	4.86518
11	2.60321	3.05347	3.81575	4.57481	5.57779
12	3.07382	3.57056	4.40379	5.22603	6.30380
13	3.56503	4.10691	5.00874	5.89186	7.04150
14	4.07468	4.66043	5.62872	6.57063	7.78953
15	4.60094	5.22935	6.26214	7.26094	8.54675
16	5.14224	5.81221	6.90766	7.96164	9.31223
17	5.69724	6.40776	7.56418	8.67176	10.0852
18	6.26481	7.01491	8.23075	9.39046	10.8649
19	6.84398	7.63273	8.90655	10.1170	11.6509
20	7.43386	8.26040	9.59083	10.8508	12.4426
21	8.03366	8.89720	10.28293	11.5913	13.2396
22	8.64272	9.54249	10.9823	12.3380	14.0415
23	9.26042	10.19567	11.6885	13.0905	14.8479
24	9.88623	10.8564	12.4011	13.8484	15.6587
25	10.5197	11.5240	13.1197	14.6114	16.4734
26	11.1603	12.1981	13.8439	15.3791	17.2919
27	11.8076	12.8786	14.5733	16.1513	18.1138
28	12.4613	13.5648	15.3079	16.9279	18.9392
29	13.1211	14.2565	16.0471	17.7083	19.7677
30	13.7867	14.9535	16.7908	18.4926	20.5992
40	20.7065	22.1643	24.4331	26.5093	29.0505
50	27.9907	29.7067	32.3574	34.7642	37.6886
60	35.5346	37.4848	40.4817	43.1879	46.4589
70	43.2752	45.4418	48.7576	51.7393	55.3290
80	51.1720	53.5400	57.1532	60.3915	64.2778
90	59.1963	61.7541	65.6466	69.1260	73.2912
100*	67.3276	70.0648	74.2219	77.9295	82.3581

*For df greater than 100 the expression $\sqrt{2\gamma^2 - \sqrt{2k-1}} = Z$ follows the standardized normal distribution, where k represents the degrees of freedom.

TABLE D.5A Durbin-Watson d Statistic: Significance Points of d_L and d_U at 0.05 Level of Significance

n	k' = 1		k' = 2		k' = 3		k' = 4		k' = 5		k' = 6		k' = 7		k' = 8		k' = 9		k' = 10	
	d_L	d_U	d_L	d_U	d_L	d_U	d_L	d_U	d_L	d_U	d_L	d_U	d_L	d_U	d_L	d_U	d_L	d_U	d_L	d_U
6	0.610	1.400	—	—	—	—	—	—	—	—	—	—	—	—	—	—	—	—	—	—
7	0.700	1.356	0.467	1.896	—	—	—	—	—	—	—	—	—	—	—	—	—	—	—	—
8	0.763	1.332	0.559	1.777	0.368	2.287	—	—	—	—	—	—	—	—	—	—	—	—	—	—
9	0.824	1.320	0.629	1.699	0.455	2.128	0.296	2.588	—	—	—	—	—	—	—	—	—	—	—	—
10	0.879	1.320	0.697	1.641	0.525	2.016	0.376	2.414	0.243	2.822	—	—	—	—	—	—	—	—	—	—
11	0.927	1.324	0.658	1.604	0.595	1.928	0.444	2.283	0.316	2.645	0.203	3.005	—	—	—	—	—	—	—	—
12	0.971	1.331	0.812	1.579	0.658	1.864	0.512	2.177	0.379	2.506	0.268	2.832	0.171	3.149	—	—	—	—	—	—
13	1.010	1.340	0.861	1.562	0.715	1.816	0.574	2.094	0.445	2.390	0.328	2.692	0.230	2.985	0.147	3.266	—	—	—	—
14	1.045	1.350	0.905	1.551	0.767	1.779	0.632	2.030	0.505	2.296	0.389	2.572	0.286	2.848	0.200	3.111	0.127	3.360	—	—
15	1.077	1.361	0.946	1.543	0.814	1.750	0.685	1.977	0.562	2.220	0.447	2.472	0.343	2.727	0.251	2.979	0.175	3.216	0.111	3.438
16	1.106	1.371	0.982	1.539	0.857	1.728	0.734	1.935	0.615	2.157	0.502	2.388	0.398	2.624	0.304	2.860	0.222	3.090	0.155	3.304
17	1.133	1.381	1.015	1.536	0.897	1.710	0.779	1.900	0.664	2.104	0.554	2.318	0.451	2.537	0.356	2.757	0.272	2.975	0.198	3.184
18	1.158	1.391	1.046	1.535	0.933	1.696	0.820	1.872	0.710	2.060	0.603	2.257	0.502	2.461	0.407	2.667	0.321	2.873	0.244	3.073
19	1.180	1.401	1.074	1.536	0.967	1.685	0.859	1.848	0.752	2.023	0.649	2.206	0.549	2.396	0.456	2.589	0.369	2.783	0.290	2.974
20	1.201	1.411	1.100	1.537	0.998	1.676	0.894	1.828	0.792	1.991	0.692	2.162	0.595	2.339	0.502	2.521	0.416	2.704	0.336	2.885
21	1.221	1.420	1.125	1.538	1.026	1.669	0.927	1.812	0.829	1.964	0.732	2.124	0.637	2.290	0.547	2.460	0.461	2.633	0.380	2.806
22	1.239	1.429	1.147	1.541	1.053	1.664	0.958	1.797	0.863	1.940	0.769	2.090	0.677	2.246	0.588	2.407	0.504	2.571	0.424	2.734
23	1.257	1.437	1.168	1.543	1.078	1.660	0.986	1.785	0.895	1.920	0.804	2.061	0.715	2.208	0.628	2.360	0.545	2.514	0.465	2.670
24	1.273	1.446	1.188	1.546	1.101	1.656	1.013	1.775	0.925	1.902	0.837	2.035	0.751	2.174	0.666	2.318	0.584	2.464	0.506	2.613
25	1.288	1.454	1.206	1.550	1.123	1.654	1.038	1.767	0.953	1.886	0.868	2.012	0.784	2.144	0.702	2.280	0.621	2.419	0.544	2.560
26	1.302	1.461	1.224	1.553	1.143	1.652	1.062	1.759	0.979	1.873	0.897	1.992	0.816	2.117	0.735	2.246	0.657	2.379	0.581	2.513
27	1.316	1.469	1.240	1.556	1.162	1.651	1.084	1.753	1.004	1.861	0.925	1.974	0.845	2.093	0.767	2.216	0.691	2.342	0.616	2.470
28	1.328	1.476	1.255	1.560	1.181	1.650	1.104	1.747	1.028	1.850	0.951	1.958	0.874	2.071	0.798	2.188	0.723	2.309	0.650	2.431
29	1.341	1.483	1.270	1.563	1.198	1.650	1.124	1.743	1.050	1.841	0.975	1.944	0.900	2.052	0.826	2.164	0.753	2.278	0.682	2.396
30	1.352	1.489	1.284	1.567	1.214	1.650	1.143	1.739	1.071	1.833	0.998	1.931	0.926	2.034	0.854	2.141	0.782	2.251	0.712	2.363
31	1.363	1.496	1.297	1.570	1.229	1.650	1.160	1.735	1.090	1.825	1.020	1.920	0.950	2.018	0.879	2.120	0.810	2.226	0.741	2.333
32	1.373	1.502	1.309	1.574	1.244	1.650	1.177	1.732	1.109	1.819	1.041	1.909	0.972	2.004	0.904	2.102	0.836	2.203	0.769	2.306
33	1.383	1.508	1.321	1.577	1.258	1.651	1.193	1.730	1.127	1.813	1.061	1.900	0.994	1.991	0.927	2.085	0.861	2.181	0.795	2.281
34	1.393	1.514	1.333	1.580	1.271	1.652	1.208	1.728	1.144	1.808	1.080	1.891	1.015	1.979	0.950	2.069	0.885	2.162	0.821	2.257
35	1.402	1.519	1.343	1.584	1.283	1.653	1.222	1.726	1.160	1.803	1.097	1.884	1.034	1.967	0.971	2.054	0.908	2.144	0.845	2.236
36	1.411	1.525	1.354	1.587	1.295	1.654	1.236	1.724	1.175	1.799	1.114	1.877	1.053	1.957	0.991	2.041	0.930	2.127	0.868	2.216
37	1.419	1.530	1.364	1.590	1.307	1.655	1.249	1.723	1.190	1.795	1.131	1.870	1.071	1.948	1.011	2.029	0.951	2.112	0.891	2.198
38	1.427	1.535	1.373	1.594	1.318	1.656	1.261	1.722	1.204	1.792	1.146	1.864	1.088	1.939	1.029	2.017	0.970	2.098	0.912	2.180
39	1.435	1.540	1.382	1.597	1.328	1.658	1.273	1.722	1.218	1.789	1.161	1.859	1.104	1.932	1.047	2.007	0.990	2.085	0.932	2.164
40	1.442	1.544	1.391	1.600	1.338	1.659	1.285	1.721	1.230	1.786	1.175	1.854	1.120	1.924	1.064	1.997	1.008	2.072	0.952	2.149
45	1.475	1.566	1.430	1.615	1.383	1.666	1.336	1.720	1.287	1.776	1.238	1.835	1.189	1.895	1.139	1.958	1.089	2.022	1.038	2.088
50	1.503	1.585	1.462	1.628	1.421	1.674	1.378	1.721	1.335	1.771	1.291	1.822	1.246	1.875	1.201	1.930	1.156	1.986	1.110	2.044
55	1.528	1.601	1.490	1.641	1.452	1.681	1.414	1.724	1.374	1.768	1.334	1.814	1.294	1.861	1.253	1.909	1.212	1.959	1.170	2.010
60	1.549	1.616	1.514	1.652	1.480	1.689	1.444	1.727	1.408	1.767	1.372	1.808	1.335	1.850	1.298	1.894	1.260	1.939	1.222	1.984
65	1.567	1.629	1.536	1.662	1.503	1.696	1.471	1.731	1.438	1.767	1.404	1.805	1.370	1.843	1.336	1.882	1.301	1.923	1.266	1.964
70	1.583	1.641	1.554	1.672	1.525	1.703	1.494	1.735	1.464	1.768	1.433	1.802	1.401	1.837	1.369	1.873	1.337	1.910	1.305	1.948
75	1.598	1.652	1.571	1.680	1.543	1.709	1.515	1.739	1.487	1.770	1.458	1.801	1.428	1.834	1.399	1.867	1.369	1.901	1.339	1.935
80	1.611	1.662	1.586	1.688	1.560	1.715	1.534	1.743	1.507	1.772	1.480	1.801	1.453	1.831	1.425	1.861	1.397	1.893	1.369	1.925
85	1.624	1.671	1.600	1.696	1.575	1.721	1.550	1.747	1.525	1.774	1.500	1.801	1.474	1.829	1.448	1.857	1.422	1.886	1.396	1.916
90	1.635	1.679	1.612	1.703	1.589	1.726	1.566	1.751	1.542	1.776	1.518	1.801	1.494	1.827	1.469	1.854	1.445	1.881	1.420	1.909
95	1.645	1.687	1.623	1.709	1.602	1.732	1.579	1.755	1.557	1.778	1.535	1.802	1.512	1.827	1.489	1.852	1.465	1.877	1.442	1.903
100	1.654	1.694	1.634	1.715	1.613	1.736	1.592	1.758	1.571	1.780	1.550	1.803	1.528	1.826	1.506	1.850	1.484	1.874	1.462	1.898
150	1.720	1.746	1.706	1.760	1.693	1.774	1.679	1.788	1.665	1.802	1.651	1.817	1.637	1.832	1.622	1.847	1.608	1.862	1.594	1.877
200	1.758	1.778	1.748	1.789	1.738	1.799	1.728	1.810	1.718	1.820	1.707	1.831	1.697	1.841	1.686	1.852	1.675	1.863	1.665	1.874

n	k' = 11		k' = 12		k' = 13		k' = 14		k' = 15		k' = 16		k' = 17		k' = 18		k' = 19		k' = 20	
	d _L	d _U	d _L	d _U	d _L	d _U	d _L	d _U	d _L	d _U	d _L	d _U	d _L	d _U	d _L	d _U	d _L	d _U	d _L	d _U
16	0.098	3.503	—	—	—	—	—	—	—	—	—	—	—	—	—	—	—	—	—	—
17	0.138	3.378	0.087	3.557	—	—	—	—	—	—	—	—	—	—	—	—	—	—	—	—
18	0.177	3.265	0.123	3.441	0.078	3.603	—	—	—	—	—	—	—	—	—	—	—	—	—	—
19	0.220	3.159	0.160	3.335	0.111	3.496	0.070	3.642	—	—	—	—	—	—	—	—	—	—	—	—
20	0.263	3.063	0.200	3.234	0.145	3.395	0.100	3.542	0.063	3.676	—	—	—	—	—	—	—	—	—	—
21	0.307	2.976	0.240	3.141	0.182	3.300	0.132	3.448	0.091	3.583	0.058	3.705	—	—	—	—	—	—	—	—
22	0.349	2.897	0.281	3.057	0.220	3.211	0.166	3.358	0.120	3.495	0.083	3.619	0.052	3.731	—	—	—	—	—	—
23	0.391	2.826	0.322	2.979	0.259	3.128	0.202	3.272	0.153	3.409	0.110	3.535	0.076	3.650	0.048	3.753	—	—	—	—
24	0.431	2.761	0.362	2.908	0.297	3.053	0.239	3.193	0.186	3.327	0.141	3.454	0.101	3.572	0.070	3.678	0.044	3.773	—	—
25	0.470	2.702	0.400	2.844	0.335	2.983	0.275	3.119	0.221	3.251	0.172	3.376	0.130	3.494	0.094	3.604	0.065	3.702	0.041	3.790
26	0.508	2.649	0.438	2.784	0.373	2.919	0.312	3.051	0.256	3.179	0.205	3.303	0.160	3.420	0.120	3.531	0.087	3.632	0.060	3.724
27	0.544	2.600	0.475	2.730	0.409	2.859	0.348	2.987	0.291	3.112	0.238	3.233	0.191	3.349	0.149	3.460	0.112	3.563	0.081	3.658
28	0.578	2.555	0.510	2.680	0.445	2.805	0.383	2.928	0.325	3.050	0.271	3.168	0.222	3.283	0.178	3.392	0.138	3.495	0.104	3.592
29	0.612	2.515	0.544	2.634	0.479	2.755	0.418	2.874	0.359	2.992	0.305	3.107	0.254	3.219	0.208	3.327	0.166	3.431	0.129	3.528
30	0.643	2.477	0.577	2.592	0.512	2.708	0.451	2.823	0.392	2.937	0.337	3.050	0.286	3.160	0.238	3.266	0.195	3.368	0.156	3.465
31	0.674	2.443	0.608	2.553	0.545	2.665	0.484	2.776	0.425	2.887	0.370	2.996	0.317	3.103	0.269	3.208	0.224	3.309	0.183	3.406
32	0.703	2.411	0.638	2.517	0.576	2.625	0.515	2.733	0.457	2.840	0.401	2.946	0.349	3.050	0.299	3.153	0.253	3.252	0.211	3.348
33	0.731	2.382	0.668	2.484	0.606	2.588	0.546	2.692	0.488	2.796	0.432	2.899	0.379	3.000	0.329	3.100	0.283	3.198	0.239	3.293
34	0.758	2.355	0.695	2.454	0.634	2.554	0.575	2.654	0.518	2.754	0.462	2.854	0.409	2.954	0.359	3.051	0.312	3.147	0.267	3.240
35	0.783	2.330	0.722	2.425	0.662	2.521	0.604	2.619	0.547	2.716	0.492	2.813	0.439	2.910	0.388	3.005	0.340	3.099	0.295	3.190
36	0.808	2.306	0.748	2.398	0.689	2.492	0.631	2.586	0.575	2.680	0.520	2.774	0.467	2.868	0.417	2.961	0.369	3.053	0.323	3.142
37	0.831	2.285	0.772	2.374	0.714	2.464	0.657	2.555	0.602	2.646	0.548	2.738	0.495	2.829	0.445	2.920	0.397	3.009	0.351	3.097
38	0.854	2.265	0.796	2.351	0.739	2.438	0.683	2.526	0.628	2.614	0.575	2.703	0.522	2.792	0.472	2.880	0.424	2.968	0.378	3.054
39	0.875	2.246	0.819	2.329	0.763	2.413	0.707	2.499	0.653	2.585	0.600	2.671	0.549	2.757	0.499	2.843	0.451	2.929	0.404	3.013
40	0.896	2.228	0.840	2.309	0.785	2.391	0.731	2.473	0.678	2.557	0.626	2.641	0.575	2.724	0.525	2.808	0.477	2.892	0.430	2.974
45	0.988	2.156	0.938	2.225	0.887	2.296	0.838	2.367	0.788	2.439	0.740	2.512	0.692	2.586	0.644	2.659	0.598	2.733	0.553	2.807
50	1.064	2.103	1.019	2.163	0.973	2.225	0.927	2.287	0.882	2.350	0.836	2.414	0.792	2.479	0.747	2.544	0.703	2.610	0.660	2.675
55	1.129	2.062	1.087	2.116	1.045	2.170	1.003	2.225	0.961	2.281	0.919	2.338	0.877	2.396	0.836	2.454	0.795	2.512	0.754	2.571
60	1.184	2.031	1.145	2.079	1.106	2.127	1.068	2.177	1.029	2.227	0.990	2.278	0.951	2.330	0.913	2.382	0.874	2.434	0.836	2.487
65	1.231	2.006	1.195	2.049	1.160	2.093	1.124	2.138	1.088	2.183	1.052	2.229	1.016	2.276	0.980	2.323	0.944	2.371	0.908	2.419
70	1.272	1.986	1.239	2.026	1.206	2.066	1.172	2.106	1.139	2.148	1.105	2.189	1.072	2.232	1.038	2.275	1.005	2.318	0.971	2.362
75	1.308	1.970	1.277	2.006	1.247	2.043	1.215	2.080	1.184	2.118	1.153	2.156	1.121	2.195	1.090	2.235	1.058	2.275	1.027	2.315
80	1.340	1.957	1.311	1.991	1.283	2.024	1.253	2.059	1.224	2.093	1.195	2.129	1.165	2.165	1.136	2.201	1.106	2.238	1.076	2.275
85	1.369	1.946	1.342	1.977	1.315	2.009	1.287	2.040	1.260	2.073	1.232	2.105	1.205	2.139	1.177	2.172	1.149	2.206	1.121	2.241
90	1.395	1.937	1.369	1.966	1.344	1.995	1.318	2.025	1.292	2.055	1.266	2.085	1.240	2.116	1.213	2.148	1.187	2.179	1.160	2.211
95	1.418	1.929	1.394	1.956	1.370	1.984	1.345	2.012	1.321	2.040	1.296	2.068	1.271	2.097	1.247	2.126	1.222	2.156	1.197	2.186
100	1.439	1.923	1.416	1.948	1.393	1.974	1.371	2.000	1.347	2.026	1.324	2.053	1.301	2.080	1.277	2.108	1.253	2.135	1.229	2.164
150	1.579	1.892	1.564	1.908	1.550	1.924	1.535	1.940	1.519	1.956	1.504	1.972	1.489	1.989	1.474	2.006	1.458	2.023	1.443	2.040
200	1.654	1.885	1.643	1.896	1.632	1.908	1.621	1.919	1.610	1.931	1.599	1.943	1.588	1.955	1.576	1.967	1.565	1.979	1.554	1.991

Note: n = number of observations, k' = number of explanatory variables excluding the constant term.

Source: This table is an extension of the original Durbin-Watson table and is reproduced from N. E. Savin and K. J. White, "The Durbin-Watson Test for Serial Correlation with Extreme Small Samples or Many Regressors," *Econometrica*, vol. 45, November 1977, pp. 1989-96 and as corrected by R. W. Farebrother, *Econometrica*, vol. 48, September 1980, p. 1554. Reprinted by permission of the Econometric Society.

EXAMPLE 1

If $n = 40$ and $k' = 4$, $d_L = 1.285$ and $d_U = 1.721$. If a computed d value is less than 1.285, there is evidence of positive first-order serial correlation; if it is greater than 1.721, there is no evidence of positive first-order serial correlation; but if d lies between the lower and the upper limit, there is inconclusive evidence regarding the presence or absence of positive first-order serial correlation.



Stockholms
universitet

Department of Statistics

Correction sheet

Date: 5/1-17

Room: Brunnsvikssalen

Exam: Econometrics I, Regressionsanalys

Course: Econometrics

Anonymous code:

EKR-0011

- I authorise the anonymous posting of my exam, in whole or in part, on the department homepage as a sample student answer.

NOTE! ALSO WRITE ON THE BACK OF THE ANSWER SHEET

Mark answered questions

1	2	3	4	5	6	7	8	9	Total number of pages
X	X	X	X						5 17
Teacher's notes	29	13	15	8					

Points	Grade	Teacher's sign.
63	D	PGH

11

a) modellen ser ut som följande

$$y_i = \beta_0 + \beta_1 x_{1i} + \beta_2 x_{2i} + \beta_3 x_{3i} + u_i$$

b) När vi ska testa om någon av våra parametrar är signifikant skiljer från noll genomför vi ett F-test

Vår teststatistik: Vår hypoteser:

$$F = \frac{ESS / (k-1)}{RSS / (n-k)} \quad H_0: \beta_2 = \beta_3 = \beta_4 = 0$$

H_A : någon av våra parametrar är signifikant skiljer från noll $\beta_2 \neq \beta_3 = \beta_4 \neq 0$

Vårt F-test ska bli 30,986 enligt printouten

$n = 13$ $k = 4$ \leftarrow antal parametrar

$RSS = 38,6740$

$F = \frac{(399,45437 / (4-1))}{(38,6740 / (13-4))} = 30,9867269$

$ESS = 399,45437$

$(38,6740 / (13-4))$

Kollar vi i tabellen så är de kritiska värdena

3,86 på en 5% signifikansnivå och 6,99

på 0,01 sign. nivå. Vi kan därmed förkasta

H_0 på både en 5% sign. nivå och en 1%

vilket vi även kan se på p-värdet i printouten

vilket är 0,0001, detta är den lägsta sign. nivå

vi kan förkasta H_0 . p-värdet är långt under

1% och 5%

$30,986 > 3,86$

Bestäm om $F_{obs} > F_{crit}$ förkasta H_0

$30,986 > 6,99$

OK

c) Formeln för $R^2 = 1 - \frac{RSS(n-k)}{TSS(n-1)}$

$k=4$
 $n=13$

$$1 - \frac{(38,67640 / (13-4))}{(438,13677 / (13-1))} = 0,8822987636$$

$R^2 = 0,9117$ och $R^2 = 0,8822987636$ OK

d) eftersom att x_3 inte är signifikant på ens en 10% nivå, skulle jag kunna tänka mig att ta bort den variabeln om inte den är en fundamentell del i en viss teori, t ex ekonomisk. Jag skulle prövat att ta bort den och därefter göra ett F-test för att se skillnaderna i koefficienterna, samt kontrollera för multi-kollinearitet.

min modell blir därmed

$$y_i = \beta_1 + \beta_2 x_{2i} + \beta_3 x_{3i} + \epsilon_i$$

e) $n=13$
 $k=3$

	positiv serial korrelation	positiv gränzn	förväntad ink H0	neg. serial korrelation
H0: Ingen serial korrelation				
H1: vi har serial korrelation				
	d1	dU	U-dn	U-d1
	0,715	1,816	2,184	3,285
		större	väntade ur tabell	

Text statistik

$$d = \frac{\sum_{t=1}^n (U_t - U_{t-1})^2}{\sum_{t=1}^n U_t^2} = \frac{36,12089}{38,61264} \approx 0,9355$$

$$\sum_{t=1}^{13} (U_t - U_{t-1})^2 \approx 36,12089$$

$$\sum_{t=1}^{13} U_t^2 \approx 38,61264$$

Vi hämtar därmed mellan d1 och dU gränzonen, där det kan vara risk för positiv serial korrelation. Vi är dock närmare d1 i värdet än

e) Vi har ett värde på a som är närmare
 än a_n , eftersom vi är så pass
 nära a 's lower limit kan vi behöva
 ta det seriöst även om vi inte direkt
 kan förhålla till, utan vi måste fundera
 om överväga

Min uträkning är för de följer nedan

$$(u_{13} - u_{12})^2 = (-1,70524 - 3,2108)^2 = 4,93570616$$

$$(u_{12} - u_{11})^2 = 0,58436851$$

$$(u_{11} - u_{10})^2 = 3,31528$$

$$(u_{10} - u_9)^2 = 0,6075578916$$

$$(u_9 - u_8)^2 = 0,0546016685$$

$$(u_8 - u_7)^2 = 4,7306685$$

$$(u_7 - u_6)^2 = 5,978465108$$

$$(u_6 - u_5)^2 = 5,122707956$$

$$(u_5 - u_4)^2 = 7,644395523$$

$$(u_4 - u_3)^2 = 2,37156760$$

$$(u_3 - u_2)^2 = 0,1499470729$$

$$(u_2 - u_1)^2 = 0,6226630281$$

$$\Sigma = 36,12089$$

OK

/29

$$a. Y_i = B_1 \cdot e^{B_2 \cdot x_i} \cdot u_i$$

a) om vi vill göra den linjär så tar vi ln på båda sidorna

$$\ln Y_i = \ln(B_1 \cdot e^{B_2 \cdot x_i} \cdot u_i) \Rightarrow \ln Y_i = \ln B_1 + B_2 x_i + \ln u_i$$

$\ln B_1 = B_1^*$ $\ln u_i = u_i^*$ $\ln Y_i = Y_i^*$

$$Y_i^* = B_1^* + B_2 x_i + u_i^*$$

OK

b) Beräkna de estimaterna till B_1 och B_2

$$\hat{B}_2 = \frac{\sum_{i=1}^n (x_i - \bar{x})(Y_i^* - \bar{Y}^*)}{\sum_{i=1}^n (x_i - \bar{x})^2} = \frac{\sum x_i Y_i^* - n \bar{x} \bar{Y}^*}{\sum x_i^2 - n(\bar{x})^2}$$

$$\sum_{i=1}^n x_i \ln Y_i = 51,6005$$

$$\hat{B}_2 = \frac{51,6005 - 11 \cdot 6 \cdot 0,5635}{506 - 11 \cdot 6^2} = \frac{51,6005 - 37,017}{506 - 396} = \frac{14,5835}{110} \approx 0,132577$$

$\hat{B}_2 \approx 0,131$ OK

$$\hat{B}_1 = \sqrt{\bar{Y}^*} - \hat{B}_2 \bar{x} \Rightarrow 1,908818182 = 0,131 \cdot 6$$

$$\hat{B}_1 = 1,122818182$$

$\hat{B}_1 \approx 1,123$

Svar:

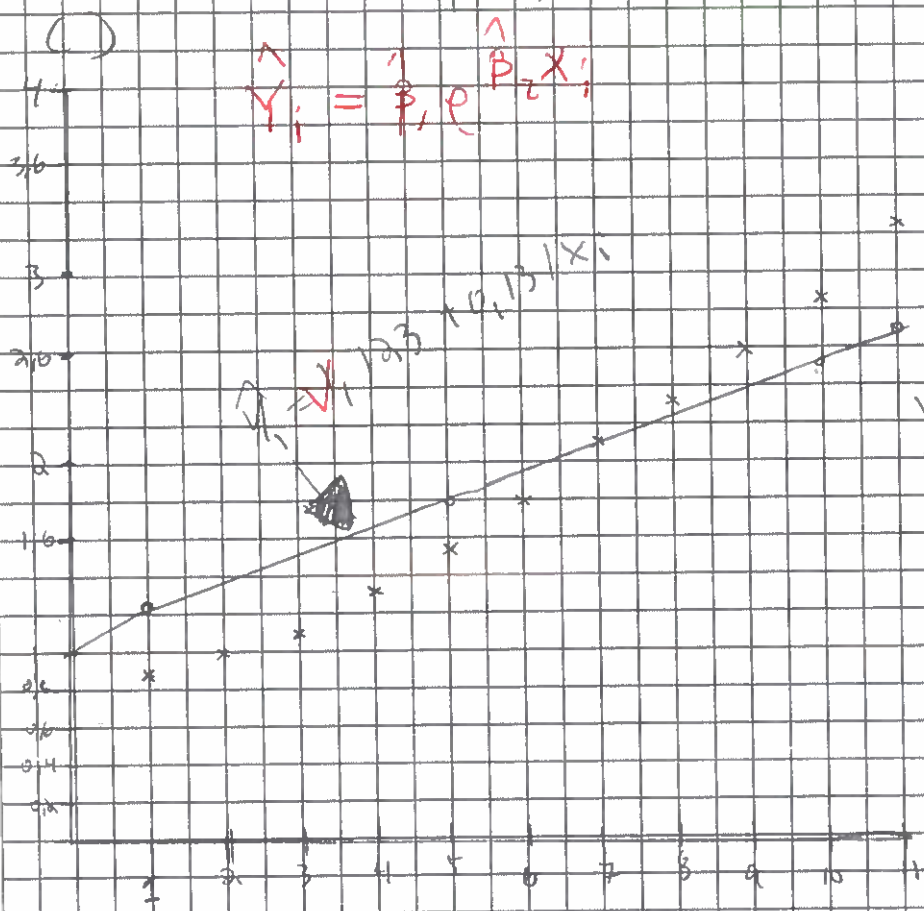
$$\hat{B}_1 = 1,123$$

$$\hat{B}_2 = 0,131$$

$$\hat{y}_i^* = 1,123 + 0,131x_i$$

x = Data plot
o = Regression

$$\hat{y}_i = \hat{\beta}_1 + \hat{\beta}_2 x_i$$



Var svårt att fåta
grafen exakt. Men
vi ser att den
regression jag har
måklart inte gör ett
överdåligt bra jobb.
Dess data skulle för ett
mönster, först alla under
därefter är alla över
regressionlinjen.

Residualerna
blir först minus
därefter plus.

a) $\hat{y}_{12} = 1,123 + 0,131 \times 12 = 2,695$
Svar: 2,695

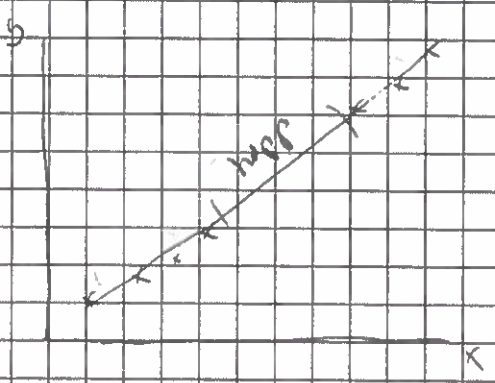
13

3. Kan kan man ju men det går emot antagandet

a) Allt residuernas medelvärde ska vara noll. Alltså ingen av residualerna ligger på noll så går det med värdet kan inte bli noll, utan detta inte!
antagandet gör inte den klassiska modellen ihop. I så fall är inte estimator unbiased och konsistent.

b) Det är till viss del tankeväckande att det blir ett sådant hopp i x-värde, där det är en stor sträcka som inte har några x-värden.

Däremot verkar x-värderna som kommer efter hoppet inte skilja sig alltför mycket från regressionslinjen, då residualernas värde är ungefär densamma. Så det är fortfarande ingenting. Beror på hur man ser på hoppet jag säger att det är ingenting i alla fall.



Även normalitet kan ifrågasättas

c) Här skulle jag säga att antagandet för homoskedasticity är i farozonen. Om man kollar hur x-värderna är fördelade längs x-axeln. Ser man att de två första grupperna är prövar så ligger de rätt jämnt fördelade så att medelvärdet blir ungefär vid regressionslinjen, men den sista ligger långt ovanför regressionslinjen. Vi kan därmed fråga oss om variansen är konstant eller om den börjar skilja sig på högre x-värden. Detta kan medföra att det blir svårare att precisera våra parametrar, så vi gör om för tester där SE kan bli högre.

4. a) — Kan ej, fått hjälpslipp

b) När man säger att något är nested innebär det att man har en variabel som är en del av en annan variabel, som t ex i tidsserier när man kan ha flera $AR(L)$ modeller $t-1$ och $t-2$. Alltså utgår $t-1$ och $t-2$ från t men har 1 respektive 2 fördröjningar. I a) fråga kan jag ge mig på en gissning att $E(Y|x) = \alpha + \beta x$ är nested eftersom den innehåller flera x -variabler, dessa kan fylla olika funktioner även om de utgår från samma grunddata.

c) Jag skulle först jämföra deras R^2 och \bar{r}^2 värden, därefter F-tester på parametrarnas summat, samt se till via t-test om de enskilda parametrarna är signifikanta. Kolla till dess residualer för att se om de bär spår av ^(om vi har enstaka) autokorrelation, samt heteroscedasticity. Den modell som har högst R^2 , signifikanta parametrar och som inte bär spår av heteroscedasticity eller autokorrelation. Skulle därefter göra ett F-test mellan dem för (utgår från att en är nested) för att se om ett x -värde råder rikt. Jag skulle inte lågt "!" för stor vikt på \bar{r}^2 utan främst på att BLUE eller BLUE antagandena håller, den modell som klarar sig bäst i dessa