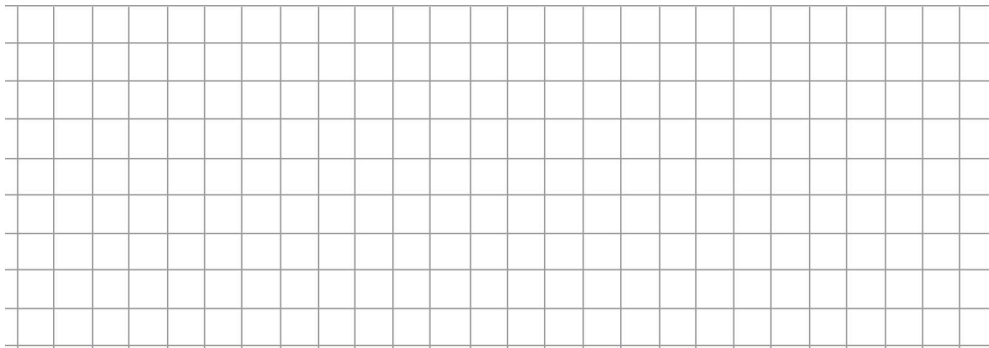


Rektangeln

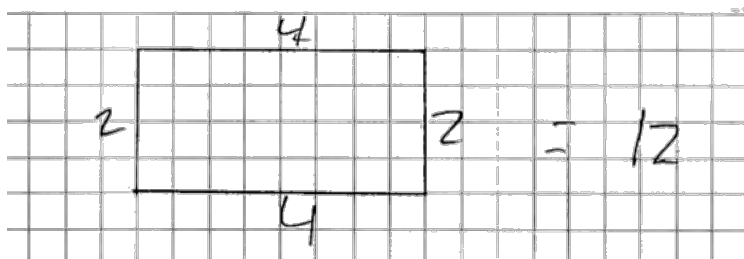
- a) Rita en rektangel med omkretsen 12 cm.



- b) Hur stor area har din rektangel?
Visa hur du löser uppgiften.

Elevarbete 1

a)



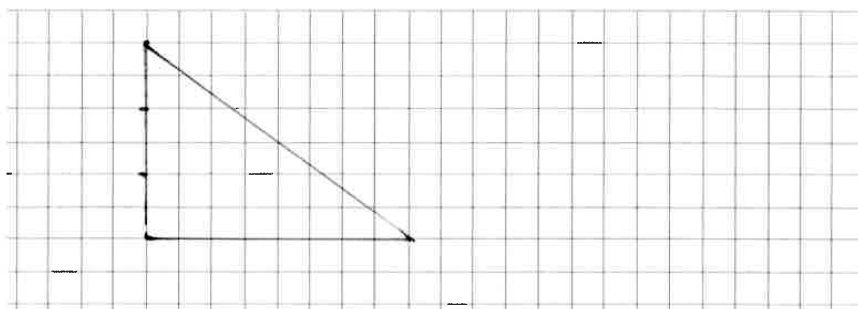
b)

$$2 \cdot 4 = 8$$

arean är 8

Elevarbete 2

a)



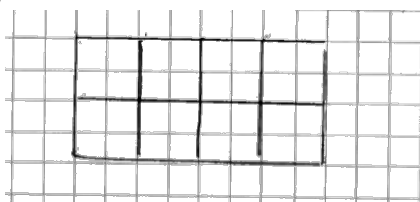
b)

$$3 \cdot 4 = 12 \quad \frac{12}{2} = 06$$

Svar: 6 cm^2

Elevarbete 3

a)

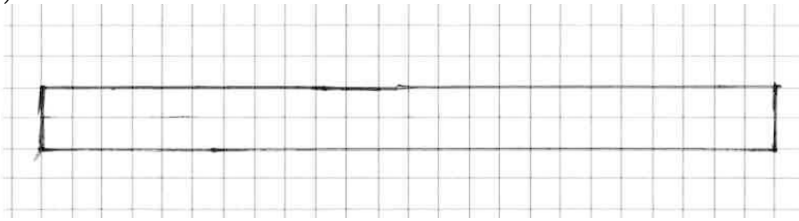


b)

8 cm^2

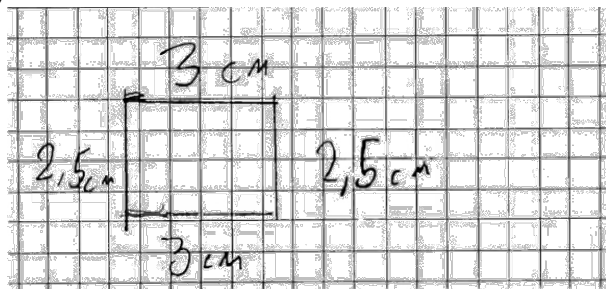
Elevarbete 4

a)



Elevarbete 5

a)



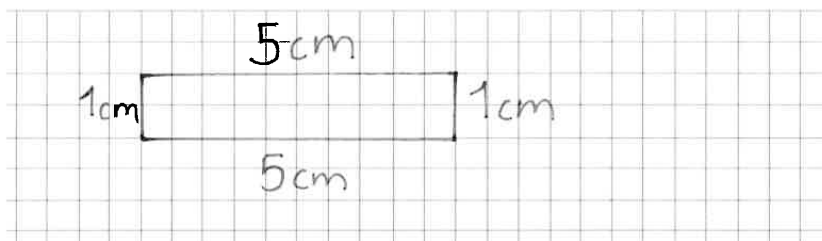
b)

$$3 \text{ cm} \cdot 2,5 = 6,5 \text{ area}$$
$$\begin{array}{r} 30 \\ \cdot 2,5 \\ \hline \end{array}$$

6,5 area

Elevarbete 6

a)



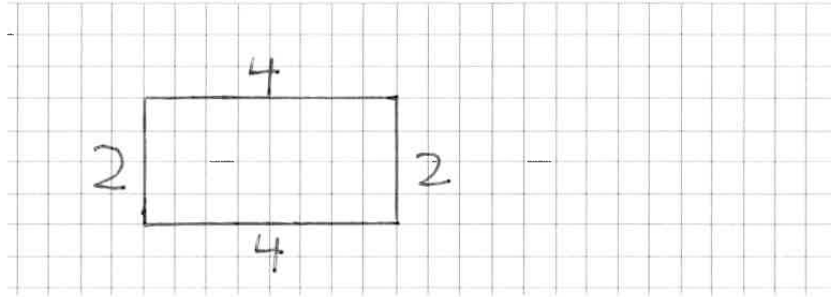
b)

$$5 \cdot 1 = 5 \quad \text{längden gånger bredden}$$

$$\text{Svar: } 5 \text{ cm}^2$$

Elevarbete 7

a)

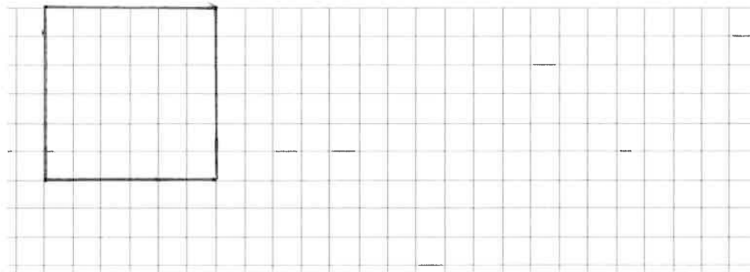


b)

$$4 + 2 + 4 + 2 = 12$$

Elevarbete 8

a)



b)

$$3 \cdot 3 = 9 \text{ cm}^2$$