

Mathematics

Part E

Årskurs

3

The pupil's name and class/group

1. You are planting 13 sunflowers in 8 pots.
You have to use *all* the pots.
How can you plant them? Give one suggestion.



2. On the way to the museum, there are three bus stops.

- At stop A, there are twice as many passengers waiting as at stop B.
- At stop B, there are twice as many passengers waiting as at stop C.
- At stop C, there are 4 passengers waiting.

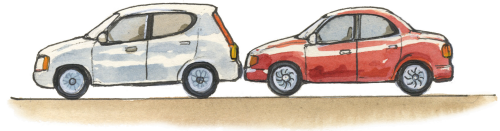
- a) How many people are waiting at each stop?
Fill out the table.

	Stop A	Stop B	Stop C
Number of passengers			

- b) How many people are waiting at all the stops put together?
Show your working and write your answer.

Answer: _____

3. Nova's toy cars are of equal length.
She lines up two cars in a row.
That makes the row 12 cm long.



- a) How long would the row be if Nova lined up four cars?
Show your working and write your answer.

Answer: _____

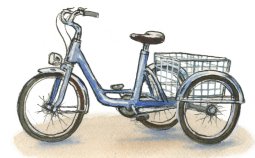
- b) How many cars are lined up if the row is 30 cm long?
Show your working and write your answer.

Answer: _____

4. Troj and his three friends share 20 plums equally.
How many plums does each one get?
Show your working and write your answer.

Answer: _____

5. The pupils are looking at bicycles which have two wheels and tricycles which have three wheels.
The bicycles and tricycles have 14 wheels all together.



Tricycle

How many bicycles and how many tricycles could there be?
There has to be at least one of each kind.



Bicycle

Answer: _____ bicycles

_____ tricycles

6. Nova and Troj are to have an equal number of coins.



I have
15 coins.

I only have
9 coins.



How many coins does Nova have to give to Troj?
Show your working and write your answer.

Answer: _____

