

Tid och Plats: Den 3 februari 2014, kl. 13-16, T40, Geovetenskapens hus,
Stockholms universitet

Närvarande styrelseledamöter: *Cynthia de Wit, ordförande*
Dan Henningson, KTH
Erik Kjellström, Rossbycentret
Martin Jakobsson, prefekt IGV
Michael McLachlan, prefekt ITM (fram till och med § 9)
Arjen Stroeven, prefekt INK
Michael Tjernström, prefekt MISU

Närvarande med yttranderätt: *Alasdair Skelton, direktör för Bolinentret*
Leonard Barrie, vetenskaplig direktör för Bolinentret (från andra halvan av § 5)
Karin Jonsell, vetenskaplig koordinatör för Bolinentret

Frånvarande: *Marianne Lilliesköld, Naturvårdsverket*
NN, studentrepresentant

Protokollförare: *Karin Jonsell*

§ 1	Mötets öppnande Ordförande hälsade välkommen.
§ 2	Protokollsjusterare <ul style="list-style-type: none"> Arjen Stroeven utsågs till att justera dagens protokoll.
§ 3	Fastställande av dagordning Dagordningen fastställdes utan tillägg.
§ 4	Föregående mötes protokoll Protokollet från förra styrelsemötet lades till handlingarna.
§ 5	Budget för 2014 Direktor Alasdair Skelton lade fram ett förslag på driftsbudget (se appendix 1) som baserar sig på en utgående balans från 2013 nära noll. Den enda större skillnaden mot förra året är en sammanslagning av posterna för kommunikation och forskarutbildning. En fullständig budget kan inte läggas förrän ekonomisystemet MERCUR stänger i slutet av februari. <ul style="list-style-type: none"> Styrelsen godkände förslaget till driftsbudget under förutsättning att den utgående balansen från 2013 visar sig vara nära noll eller positiv. Styrelsen ålägger direktörerna att presentera en fullständig budget vid nästa styrelsemöte och då fastställs den slutliga budgeten för 2014.

§ 6	<p>Det externa vetenskapliga rådet</p> <p>Bolincetrets forskningsdirektör Leonard Barrie presenterade ett förslag på det externa vetenskapliga rådets sammansättning, se appendix 2a and 2b. Förslaget har även tagits upp vid det interna vetenskapliga rådets (SAG) sammanträde 2014-01-20.</p> <ul style="list-style-type: none"> • Styrelsen godkände förslaget om ett externt vetenskapligt råd som innefattar 6 ledamöter inklusive en ordförande. • Styrelsen bad Leonard Barrie att kontakta de presumtiva ledamöterna och återkomma med ett fullständigt förslag på mandat och sammansättning på rådet vid nästa styrelsemöte. • Styrelsen godkände Leonard Barries förslag att formulera ett tackbrev till det externa vetenskapliga rådets tidigare ledamöter med styrelsens ordförande som avsändare. <p>Styrelsens ordförande Cynthia de Wit har skrivit till Naturvetenskapliga fakulteten om förslaget att utvidga styrelsen med det externa vetenskapliga rådets ordförande som Ex Officio-medlem samt tillsättandet av en studentrepresentant, se appendix 2c.</p> <ul style="list-style-type: none"> • Styrelsen beslutade att ordföranden i det externa vetenskapliga rådet per automatik är en Ex Officio-medlem i Bolincetrets styrelse med närvaro- och yttranderätt.
§ 7	<p>Byte av namn och ledare för forskningsområde 3</p> <p>Uwe Ring känner sig mer hemma i forskningsområde 6 och har därför av sagt sig ledarskapet för vetenskapsområde 3. Styrelsen tackar Uwe Ring så mycket för hans insatser. Det interna vetenskapliga rådet (SAG) har diskuterat områdets inriktning, namnbyte och framtida ledarskap och kommit med ett förslag, se appendix 3.</p> <ul style="list-style-type: none"> • Styrelsen tillstyrkte förslaget på namnbyte för forskningsområde 3 till "Hydrosphere, Cryosphere and Climate". • Styrelsen tillstyrkte förslaget på Margareta Hansson och Carl-Magnus Mörth som forskningsområdesledare tillsammans med sittande Jerker Jarsjö.
§ 8	<p>Forskarutbildning i klimatvetenskap</p> <p>Styrelsen diskuterade frågan hur forskarutbildningen i klimatvetenskap ska läggas upp vid förra styrelsemötet, men saken bordlades eftersom inte alla institutioner var representerade. Diskussionen återupptogs nu.</p> <ul style="list-style-type: none"> • Styrelsen tillstyrkte förslaget på en forskarutbildning i klimatvetenskap med flera olika inriktningar, dvs. "Klimatvetenskap med inriktning mot <i>ämnet</i>". De olika inriktningarna ska ha för ämnet anpassade tillträdeskrav och olika ämnesansvariga. • Styrelsen bad Alasdair Skelton att förbereda ett utkast till en mall för forskarutbildningsplanen och skicka den till prefekterna vid IGV, INK, ITM och MISU för ifyllande. <p>Den nya forskarutbildningen kommer inte ersätta utan komplettera existerande forskarutbildningar vid institutionerna.</p>

§ 9	<p>Grundkursen i klimatvetenskap</p> <p>Direktör Alasdair Skelton presenterade två olika administrativa sätt att hantera distanskursen i klimatvetenskap:</p> <ol style="list-style-type: none"> 1. En kurs med fyra moment om 7,5 hp vardera. 2. Fyra kurser om 7,5 hp vardera med fyra olika kursplaner. Distanskursen Tellus har med god erfarenhet organiserats på detta sätt. <ul style="list-style-type: none"> • Styrelsen beslutade att kursen ska organiseras enligt punkt 2 ovan, med fyra olika kurser som samordnas. Kurspaketet ska marknadsföras som en enhet och ha en gemensam hemsida. Ett memorandum om samarbetet måste skrivas mellan de ingående institutionerna. <p>Kursens institutionsrepresentanter ska kontakta sina respektive prefekter för att diskutera personaltilldelningen för skapandet av kursinnehållet.</p>
§ 10	<p>Information</p> <ol style="list-style-type: none"> a. Rapport från AGU i december Bolincentrums forskare höll 20 presentationer och/eller postrar vid AGU-konferensen i San Fransisco i december och montern var en stor framgång. Alla var intresserade av centret, Pangea-pusslet och väskorna. Exponeringen för Bolincentrum var utmärkt då väskorna syntes över hela San Fransisco. Bolincentrum kommer att närvara vid konferensen även nästa år. b. Årsrapporten för den strategiska forskningsmiljö som ingår i Bolincentrum Färdigställandet av Bolincentrums årsrapport för 2014 till Vetenskapsrådet är på gång och den kommer att skickas in fredagen den 7 februari. c. Bolincentrums utvärdering av det riktade stödet till klimatmodellering Instruktionerna för utvärderingen förväntas komma i mars och rapportens slutdatum kommer troligen att vara i maj. Utfrågningarna är planerade till 1-5 december 2014, så alla i styrelsen ombeds att hålla sig tillgängliga då. En bibliometrisk studie ska beställas av Alasdair Skelton. Leonard Barrie kommer att börja samla in material till en lista med framstående vetenskapliga resultat. d. Bert Bolin-föreläsningen Bert Bolin-föreläsningen kommer att hållas på eftermiddagen den 22 maj. Dagen före kommer ett vetenskapligt forum att arrangeras tillsammans med EkoKlim. Planeringen fortskrider i samarbete med Fakulteten. Bolincentrums styrelse är inbjuden på lunch på Stora Skuggan den 22 maj. e. Bolindagarna för skolor Den 5–9 maj 2014 kommer Bolincentrum att arrangera Bolindagarna för skolbarn. 5–6 maj är reserverade för lågstadiebarn, 7–8 maj för mellanstadiebarn och den 9:e maj för lärarfortbildning. Dagarna kommer att hållas på Naturens hus i Bergianska trädgården. Deltagare: Alasdair Skelton, Leonard Barrie, Malin Kylander, Agatha de Boer, Helen Coxall, Nina Kirchner, Annica Ekman, Ann Franzén, Johan Lundberg, Elisabeth Däcker och Karin Jonsell, men fler ska engageras. Polarforskningsexpeditionen SWERUS-C3 kommer att presenteras.

	<p>f. Bolindagarna 2014 Årets Bolindagarna kommer att hållas 19-20 november. Det externa vetenskapliga rådet förväntas närvara och ha ett möte med styrelsen 11.30–16 på fredagen den 21 november.</p> <p>g. Den strategiska planen för Bolincentret Den strategiska planen kommer att utarbetas parallellt med utvärderingen av Bolincentret i vår.</p> <p>h. Bolincentrets engagemang i forskningsinfrastruktur, t.ex. ICOS Bolincentret kommer att ta tag i detta efter den stora utvärderingen i vår.</p>
§ 11	<p>Övriga frågor</p> <p>a. Utlysning av en ny post doc-tjänst vid Meteorologiska institutionen Se appendix 4a-c. Styrelsen tillstyrker förslaget.</p>
§ 12	<p>Nästa möte</p> <p>Kommande möten under våren 2014: Torsdagen den 13 mars kl. 9–12 i T40, Geovetenskapens hus. Måndag den 19 maj kl. 9–12 i T40, Geovetenskapens hus.</p>

Vid protokollet:

Karin Jonsell

Justeras:

Cynthia de Wit

Arjen Stroeven

Tid och Plats: Den 3 februari 2014, kl. 13-16, T40, Geovetenskapens hus,
Stockholms universitet

På följande sida/or finns

Appendix 1

Alasdair Skelton

The following budget is for the Linnaeus funds for 2014. All amounts include indirect costs. There is no change to apportioning of Strategic Funds. Some entries are preliminary because until Mercur closes at the end of February. The required decision regards the operational funds (in RED).

Linnaeus funds

The following budget is proposed for Linnaeus funds. This budget is unchanged from 2013 with the exception that costs for Karin Jonsell's salary are higher (because Karin is employed for 12 months of 2014) and that funds for communication and education are combined in a single entry.

Bolincetret (Linnaeus)	Belopp	Konto / till Institutionen
Inkomst		
Ingående balans (Linnaeus bidrag) ¹	SEK XX,XXX,XXX ¹	
Ingående balans (Klimatforskarskolan) ²	SEK XX,XXX,XXX ¹	
Inkomst 2014 (Linnaeus bidrag)	SEK 12,000,000	
Balans, 130101	SEK XX,XXX,XXX ¹	Bolincetret/Linnaeus
Överföringar		
Christophe Sturm, inkl. 35% OH	-SEK 1,028,700 ²	IGV
Rezwan Mohammad (50%), inkl. 35% OH	-SEK 465,750 ²	IGV
Kristofer Döös, inkl. 35% OH	-SEK 1,244,700 ²	MISU
Laurent Brodea (70%), inkl. 35% OH	-SEK 687,150 ²	MISU
Nina Kirchner, inkl. 35% OH	-SEK 1,112,400 ²	INK
Håkan Grudd (50%), inkl. 35% OH	-SEK 465,750 ²	INK
Karin Jonsell, inkl. 61% OH ³	-SEK 549,753 ²	IGV
Director	-SEK 405,000	Bolincetret/Skelton
Research director	-SEK 405,000	Bolincetret/Barrie
Research Area 1	-SEK 405,000	Bolincetret/RA1
Research Area 2	-SEK 405,000	Bolincetret/RA2
Research Area 3	-SEK 405,000	Bolincetret/RA3
Research Area 4	-SEK 405,000	Bolincetret/RA4
Research Area 5	-SEK 405,000	Bolincetret/RA5
Research Area 6	-SEK 405,000	Bolincetret/RA6
Kommunikation och utbildning	-SEK 607,500	Bolincetret/Kommunikation
Databas	-SEK 102,500	Bolincetret/Databas
Klimatforskarskolan ⁴	-SEK 2,000,000	Bolincetret/CRS
Summa överföringar	-SEK 11,504,203²	
Utgående balans, 131231	SEK XX,XXX,XXX¹	Bolincetret (Linnaeus)

1. To be confirmed after Mercur closes at the end of February.

2. Costs need confirmed by Heads of Department.


3. Science manager co-funded from Strategic funds (500 tkr) assumed to be appointed on April 1.

Entries in RED represent the operational budget of the Bolin Centre. This requires Board approval at its meeting so that these for final inclusion budget for 2014.

Tid och Plats: Den 3 februari 2014, kl. 13-16, T40, Geovetenskapens hus,
Stockholms universitet

På följande sida/or finns

Appendix 2a

From: Leonard Barrie leonard.barrie@geo.su.se 
Subject: External Advisory Group Mandate and Membership Next Steps in Implementation
Date: 4 februari 2014 16:58
To: Karin Jonsell karin.jonsell@su.se, Michael Tjernström michaelt@misu.su.se, Erik Kjellström erik.kjellstrom@smhi.se,
Arjen Stroeven arjen.stroeven@natgeo.su.se, Martin Jakobsson martin.jakobsson@geo.su.se, Marianne Lilliesköld
marianne.lillieskold@naturvardsverket.se, Dan Henningson hennning@mech.kth.se, Michael McLachlan
michael.mclachlan@itm.su.se, Alasdair Skelton alsadair.skelton@geo.su.se, Cynthia de Wit cynthia.de.wit@itm.su.se

Dear Bolin Centre Board and Directorate

Following up on the External Advisory Group item discussed at the Board Meeting yesterday 3 February at which I was charged with proceeding to recruit the six board members.

Attached for your information is the latest version of the document

Mandate, Membership and Modus Operandi of the External Science Advisory Group of the Bolin Centre for Climate Research

It includes a revised version of the Table of Membership candidates that captures to the best of my ability your comments and reflects some thought I have put into it this afternoon. The table informs you of the order in which candidates will be approached and also lists the backup candidates for each of the six positions. I will begin to approach candidates on Thursday so if anyone has a burning issue please telephone or SMS me immediately and we can talk. Please read the Table caption before you look at the list.

We are targeting 13 March Board meeting for a decision on a membership. The framework wording has been discussed now at two board meetings and one Science Advisory Group Meeting. I take this as near final.

Thank you
Leonard Barrie
Research Director, Bolin Centre for Climate Research
Professor for Climate and Atmospheric Science
Department of Geological Sciences
Stockholm University
106 91 Stockholm
Sweden
leonard.barrie@geo.su.se
mobile [+46761418800](tel:+46761418800) work IGV [+46 8164868](tel:+468164868)



Tid och Plats: Den 3 februari 2014, kl. 13-16, T40, Geovetenskapens hus,
Stockholms universitet

På följande sida/or finns

Appendix 2b

**Mandate, Membership and *Modus Operandi*
of the
External Science Advisory Group
of the
Bolin Centre for Climate Research**

A proposal by

Leonard Barrie¹, Alasdair Skelton² and Cynthia de Wit³

**Finalized in consultation with the Board and the Scientific
Advisory Group**

Executive Summary

The Bolin Centre for Climate Research is a multi-institutional organization based at Stockholm University targeting support of research and graduate education in Sweden on fundamental physical, chemical and biological processes in the climate system. As it evolves as a long-term feature of the Swedish research landscape, it requires strong guidance and support by the external science community. Following considerable discussion over the first ten months of the new Bolin Centre structural plan, this proposal reviews the background and history of external science advice and presents a draft document that defines the Mandate, Membership and *Modus Operandi* of the External Science Advisory Group to be engaged in 2014.

¹ Director for Research

² Director

³ Chair of the Board

Preface

From 2006 to December 2012 as the Bolin Centre was created and grew, it had external advice from a body of international scientists shown in Table 1

Table 1 Members of the Bolin Centre External Advisory Board from 2006 to 2013

	Expertise	Affiliation
Lennart Bengtsson	Dynamic Meteorology and Weather Forecasting	Max Planck Institute for Meteorology, Hamburg
Inez Fung	Dynamic Meteorology, Climate and Carbon Cycle Modelling	University of California, Berkeley
Phil Jones,	Global Climate Observations	University of East Anglia
Julian Dowdeswell	Glaciologist	Cambridge University
Johannes Oerlemans	Dynamic Meteorology, Glaciology and the Climate System	Utrecht University
David Sugden	Ice Sheet Dynamics and Climate Change	University of Edinburgh

From 2006 to 2013 detailed records of the External Advisory Board's activities were not kept but interviews with the former Director Johan Kleman indicate that they met several times providing him with reports upon which he acted. Also, we learned that Prof. Johannes Oerlemans was "de facto" chair of the group. Leonard Barrie, the Director for Research of the Bolin Centre contacted Prof. Oerlemans consulting him several times by telephone. Then a meeting was arranged in Stockholm on 9 October 2013 with Leonard Barrie, Alasdair Skelton, Director of the Bolin Centre and Cynthia de Wit, Chair of the Bolin Centre Board. This took advantage of Prof. Oerlemans being in Stockholm at the invitation of the Royal Academy of Sciences for a lecture on "World-Wide Glacier Changes".

In parallel, the issue of rejuvenation of an external science advisory group, its role in the Centre and modus operandi was raised at Board meetings of the Bolin Centre.

Also, in parallel the Director for Research consulted scientists informally on possible candidates as well as considering candidates from his considerable array of contacts.

The outcome of our preliminary discussion and analysis has led us to the conclusion that an External Science Advisory Group for the Bolin Centre is indeed necessary and useful, but if and only if, it has an active scientific membership of well-known experts with a clear mandate and a clearly defined role in contributing both to strategic decision making by the Directorate and the Board of the Bolin Centre and to promoting quality science in the Bolin Centre. This led to the following Mandate, Membership and Modus Operandi of the External Science Advisory Group.

Mandate, Membership and *Modus Operandi* of the External Science Advisory Group of the Bolin Centre for Climate Research

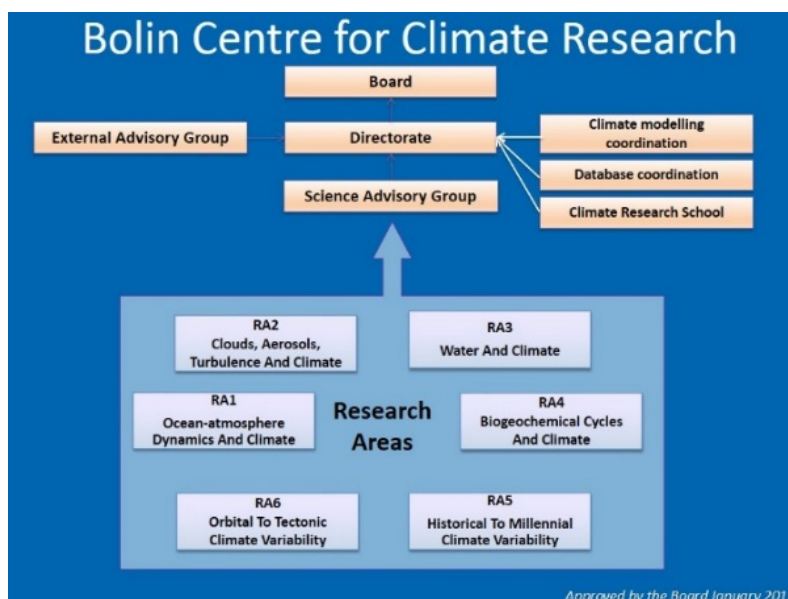
A. Role within the Bolin Centre Structure

The charter for the Bolin Centre outlines how the centre is to be run. It was approved by the Vice-Chancellor of Stockholm University initially 2007-11-22 and revised on 2012-12-20. Regarding an external scientific advisory function, it states

“Externt vetenskapligt råd: Bolincentrets styrelse ska utse ett externt vetenskapligt råd bestående av ledande nationella och internationella forskare inom klimatområdet. Rådets sammansättning föreslås till styrelsen av Bolincentrets direktörer. Rådets huvuduppgifter är: (i) att upplysa Bolincentret om dess styrkor, svagheter och möjligheter för utveckling samt (ii) att öka Bolincentrets kontakter till internationella nätverk och forskargrupper inom klimatforskningsområdet.”

(translated to English *“External Scientific Advisory Group: The Bolin Centre’s Board shall appoint an external scientific advisory group comprised of leading national and international scientists within climate research. The composition of the group is proposed to the Bolin Centre Board by the Directors. The external scientific advisory group’s main tasks are: (i) to inform the Bolin Centre of its strengths, weaknesses and possibilities for development as well as (ii) increase the Bolin Centre’s contacts to international networks and research groups within the climate research area”.*)

In the document “Bolin Centre Structure” approved by the Board in December 2012, the governance structure of the Bolin Centre for climate research shown in the top half of Figure 1 explicitly includes the External Science Advisory Group (“science” must be added to the name in order to be consistent with the charter).



B. Mission

The tasks assigned by the Faculty of Science to the External Science Advisory Group as outlined in the Bolin Centre charter are (repeated from Section A):

Task 1 Inform the Bolin Centre of its strengths, weaknesses and possibilities for development

Task 2 increase the Bolin Centre's contacts to international networks and research groups within the climate research area

Specifically, fulfilment of these tasks can be achieved by undertaking the following two Missions:

1. **Strategic Planning.** Assist the Directors and Board in their efforts to ensure that the added-value of the Bolin Centre activities are strong and well communicated to stakeholders including University, government, other sponsors and the public by:
 - a) reviewing strategic plans and directions
 - b) advising the Bolin Centre on its strengths, weaknesses and about opportunities for climate and Earth system science research
2. **Science Support.** Promote the quality and international visibility of science and graduate education in the Bolin Centre by:
 - a) providing constructive feedback to scientists and students on their research
 - b) being spokespeople for Bolin Centre science and graduate education internationally
 - c) increasing the Bolin Centre's contacts to organized international networks and research groups of climate and Earth Systems research

It is hereby proposed that the External Science Advisory group will have a chair that is an *Ex Officio* Member of the Board of the Bolin Centre for Climate Research and reports to the Board once annually on **Mission 1 Strategic Planning** and to the Directors once annually on **Mission 2 Science Support**. See section D for more details on the way the group operates.

C. Membership of the External Science Advisory Group

The membership of the Bolin Centre External Science Advisory Group should fulfil the following criteria:

- i. members are well known active researchers in climate and/or Earth system research
- ii. members are linked to national and international research networks and programs in climate and Earth Systems research
- iii. the group can relate collectively to the Stockholm University and the Swedish research environment
- iv. adequate gender representation

Considering the above criteria and the six research areas of the Bolin Centre (Figure 1), it is recommended that for the period 2014 to 2016, membership of the External Science Advisory Group is as listed in Table 2 (subject to confirmation). Members will serve three year terms consistent with the founding charter of the Bolin Centre. Renewal of Membership by the Board will be possible for an extra one to three years. This practice is essential in ensuring that ultimately a situation is reached where replacement of Membership is done fractionally each year rather than all at once.

D. Modis Operandi

The External Science Advisory Group will have a chair that is automatically an *Ex Officio* Member of the Board of the Bolin Centre for Climate Research and reports to the Board once annually on Mission 1 Strategic Planning and to the Directors on Mission 2 Science Support. All travel costs and per diem costs to conduct the chairmanship will be covered.

D.1 Routinely

In autumn each year, the External Science Advisory Group attends the two-day annual Bolin Centre Meeting. In addition, the group will be asked to spend an extra one to two days around the time of the Bolin Days to make scientific presentations, meet staff and to draft the report. There will be two parts to the short report, one to the Bolin Centre Board on **Mission 1: Strategic Planning** and, one on **Mission 2: Science Support** to Directors and the Bolin Centre science community providing constructive feedback on research

All travel and per diem costs of the members will be covered for their participation in this annual event in Sweden. Members will be granted an honorarium consistent with University standards.

D.2 Occasional Advice

Occasionally, the group will be requested to act as reviewers of strategic plans under development by the Bolin Centre. Specifically this will begin in the first half of 2014, when the External Science Advisory Group members will be asked to review the Strategic Plan and the Bolin Centre Activities Report (verksamhetsplan) being developed by the Bolin Centre. This plan and report will be used to assure the University of the effectiveness of the Centre. By doing this specific task, the group will become familiar with the Bolin Centre plans and thereby be more effective in providing advice in the future.

An honorarium consistent with University standards may be offered by the Directorate of the Bolin Centre to cover efforts spent to provide solicited advice requested by the Directorate and the Board of the Bolin Centre.

Table 1 After consultation with the Bolin Centre Board and Scientific Advisory Group. Recruitment list of candidates for External Science Advisory Group of the Bolin Centre for Climate Research 2014 to 2016. Six including chair will be chosen. The top group will be approached first. They have been chosen with an eye on the following criteria: quality of candidate, balance between disciplines, connection to Scandinavian Centres and on gender balance. The backup list will be used if a candidate declines

		Expertise	Affiliation
1	Johannes Oerlemans Chair	http://www.staff.science.uu.nl/~oerle102/ Dynamic Meteorology, Glaciology and the Climate System	Utrecht University
2	Ulrike Lohmann	http://www.iac.ethz.ch/people/ulohmann Aerosols, Clouds and Climate Modelling Leader of a large European Project on Aerosols and Climate	ETH Zurich
3	Eystein Jansen	http://www.bjerknes.uib.no/ Paleoclimate	University of Bergen/Director Bjerknes Centre for Climate Research
4	Anders Lindroth	http://www.lucci.lu.se/people_lindroth.html linking the Bolin Centre to the national research program led by the Lund University Centre for Studies of Carbon Cycle and Climate Interactions (LUCCI) as well as to ICOS. Also involved in international collaboration projects both within the EU with international partners	Lund University Coordinator of LUCCI
5	Raymond Pierrehumbert	http://geosci.uchicago.edu/~rtp1/vitae.pdf Physics of climate, especially regarding the long term evolution of the climates of solar system and extrasolar planets. King Carl XVI Gustaf's Professorship in Environmental Science 2014/2015 Stockholm U Meteorology and Geosciences	The University of Chicago Department of the Geophysical Sciences Board Member Nominee
6	Prof Susan Lozier	Oceanography and biology. (http://sites.duke.edu/mslozier/). Also President Elect of The Oceanography Society (http://www.tos.org/index.html)	Duke University
Backup list			
2	Bjorn Stevens	http://www.mpimet.mpg.de/en/staff/bjorn-stevens/biography.html Overarching interests in clouds —specific questions are: How do clouds work and what determines their aggregate behavior? How do they help set large-scale circulations, or mediate interactions among other components of the Earth System? How might they change	Director the Atmosphere in the Earth System Department and is a professor (§17) at the University of Hamburg.

		in the future, how different were they in the past?	
3	Dr. Pascale Braconnot	http://www.egu.eu/awards-medals/milutin-milankovic/2009/pascale-braconnot/ paleoclimate modelling and long term climate variability processes	Lab. de Modélisation du Climat & de l'EnvironCEA-CNRS http://www.lsce.ipsl.fr/
3	Maureen Raymo	https://www.ldeo.columbia.edu/user/raymo Lamont Research Professor Biology and Paleo Environment. Paleoceanographer/marine geologist who studies the history and causes of climate change in the Earth's past.	Lamont-Doherty Earth Observatory NY USA
1 or 4	Ghassem Asrar	http://www.wcrp-climate.org/index.php/contact-us/1-ghassem-asrar Former deputy director of NASA. Five year Director of Outgoing Director of World Climate Research Programme (WCRP) until November 2013 and now heading a group on Climate research at University of Maryland. A strong strategist and communicator.	Prof. U. of Maryland
4 or 5	David Battisti	http://www.atmos.washington.edu/~david/ Professor of Atmospheric Sciences and Tamaki Endowed Chair Large-scale Atmosphere/Ocean Interaction, Paleoclimate Climate and Food Security	Dept. of Atmospheric Sciences, University of Washington Seattle USA
6	Jochen Marotzke	The role of the ocean dynamics in climate and climatic change http://www.mpimet.mpg.de/en/staff/jochen-marotzke.html	Director of MPI Director's Research Group

Tid och Plats: Den 3 februari 2014, kl. 13-16, T40, Geovetenskapens hus,
Stockholms universitet

På följande sida/or finns

Appendix 2c

From: Cynthia de Wit Cynthia.deWit@itm.su.se

Subject: Progress on changing statutes for inclusion of external board chair

Date: 22 januari 2014 09:21

To: Leonard (Len) Barrie leonard.barrie@geo.su.se, Alasdair Skelton alasdair.skelton@geo.su.se, Karin Jonsell karin.jonsell@su.se

Dear Len and Alasdair (and Karin),

I have been discussing this now with people in the rectors office (Ulrika Bjare) and the head of the faculty office (Åsa Borin) after the new year. Rektor is not keen on changing the statutes. What has been proposed is that we put this clearly into the mandate document and that the Bolin Centre Board make this decision so that it is put into the minutes. Ulrika has pointed out that it is the Bolin Center Board that will make the decision about the board and its members so this would be the logical place to put a decision about the chair as an ex officio member of the BC board. They do not see this as an item that has to be decided at the statutes level.

As for the student, all we have to do is contact SUS to have them appoint someone as this is already stated in the statutes. Rektor did not put this in the decision for the Board as it is not she who appoints students to various committees and boards, it is the student union. Åsa said we could probably contact one of the students sitting in the Faculty Board to help us contact the right person.

I suggest that text be added to the external advisory group's mandate document explicitly stating that the chair is automatically an ex officio member of the Bolin Centre Board, and that we also put this as a decision point in the agenda, along with the names of the members of the external group, so that we have a clear decision in the minutes. Hopefully this will fulfill everyone's needs.

Cheers,
Cindy

Department of Applied Environmental Science (ITM)
Stockholm University
SE-106 91 Stockholm, Sweden
tel +46 8-674 71 80
Cell +46 708 88 71 80
fax +46 8-674 76 38
e-mail: cynthia.de.wit@itm.su.se
<http://www.itm.su.se>

Tid och Plats: Den 3 februari 2014, kl. 13-16, T40, Geovetenskapens hus,
Stockholms universitet

På följande sida/or finns

Appendix 3

Bolin Centre for Climate Research
Boardmeeting 2014-02-03
Appendix 3

To the Board of the Bolin Centre:

Research Area 3

Uwe Ring has chosen to step down as co-leader for RA3 (Water and climate) because he feels that his research interests are much closer to RA6 (Orbital to tectonic climate variability). The Directorate has also become aware that research on cryosphere process is an area of strength within the Bolin Centre that is poorly represented by its RA names. On this basis and further to discussion with RA3 co-leader Jerker Jarsjö and the Science Advisory Group, we propose that RA3 is renamed "Hydrosphere, cryosphere and climate" and Margareta Hansson and Magnus Mörth, who are both agreeable to this proposition, join Jerker Jarsjö as co-leaders.

Yours faithfully,

Alasdair and Len

Tid och Plats: Den 3 februari 2014, kl. 13-16, T40, Geovetenskapens hus,
Stockholms universitet

På följande sida/or finns

Appendix 4a



Bolin Centre Board

Postdoctoral position at MISU with Bolin Centre support from SRA funding

MISU seeks the approval from the board for announcing a postdoctoral position in climate modeling.

In spring 2013, after approval by the Bolin Centre Board, MISU announced three positions as Postdoctoral Fellows, using our agreed upon share of the strategic funding (SRA) for climate modeling.

The announcement was wide, in "Climate Modeling", the potential applicants were encouraged to contact Bolin Center scientists at MISU, and also to supply a project plan for the work. The evaluation of candidates involved all senior staff at MISU as well as the Bolin Centre directors.

This procedure worked very well; we received a fairly large number of applications and many of them were very good and by summer 2013 all positions had been filled, although the last one did not start until now at the turn of the year. In fact the successful candidates were so good that one of them, Fabien Roquet, subsequently landed a VR grant as a "Young Researcher" and will therefore leave his position as a Postdoctoral Fellow.

Although Fabien will spend about 7 months of his time from the Bolin Centre budget, the delayed start for some of the others compared to the budget means that MISU has funds to announce one more position as Postdoctoral Fellow with SRA-funding. We plan to use the same strategy as before, with a broad announcement and the same open evaluation procedure and hereby ask the boards permission to proceed accordingly.

A handwritten signature in black ink, appearing to read 'Michael Tjernström'.

Michael Tjernström
Prefekt

Meteorologiska institutionen

Tid och Plats: Den 3 februari 2014, kl. 13-16, T40, Geovetenskapens hus,
Stockholms universitet

På följande sida/or finns

Appendix 4b



Postdoctoral position in Climate Modeling

at Department of Meteorology and Bolin Centre for Climate Research.
Ref. No **SU FV-0230-14** . Deadline for application is 2014-03-15.

At the Department of Meteorology at Stockholm University (www.misu.su.se) we conduct research and education in an international environment within four main areas: Atmospheric physics, Dynamic meteorology, Physical oceanography and Chemical meteorology. In all these areas there is a strong focus on the climate and on processes important for the climate and its development. The department employs some 80 individuals, of which about 35 are scientists, 30 PhD students and 15 in the administration and the technical support. The department is part of the Bolin Centre for Climate Research (www.bbcc.su.se) that together with three other departments at the university cover research of most of the important aspects of the climate system.

Project/job description

We invite candidates to propose 2-year projects under the subject heading Climate Modeling to be conducted within the Bolin Centre. The proposed projects should be oriented toward climate model development, model evaluation, and/or model applications and be under one of the following headings: (1) atmosphere and/or ocean circulation, variability, and decadal predictability, (2) representing processes at unresolved scales, (3) paleoclimate modeling, and (4) Arctic climate change. The Bolin Centre is involved in the development and application of EC-Earth. The successful candidate will be placed at the Department of Meteorology.

Qualifications

The applicant should have a PhD in Meteorology, Atmospheric Science, Oceanography, or other relevant field of science. The applicant should have excellent English language skills, both oral and written communication.

Terms of employment

The position is full time for a maximum of 2 years with a starting date on 1 May or as soon as possible. Stockholm University strives to be a work place that is free from discrimination and with equal opportunities for all.

Application

The application shall include a CV with publication list, proof of doctoral degree, a proposed project (maximum of one page) and contact information for two reference persons. The applicants are encouraged to make contact before the application to discuss project ideas with a scientist at the department found at www.misu.su.se/list_MISU.

For more information contact Bolin Centre climate model coordinator professor Gunilla Svensson, gunilla@misu.su.se or Head of Department Michael Tjernström, michaelt@misu.su.se



STOCKHOLM UNIVERSITY
**Department of Meteorology and
Bolin Centre for Climate Research**

Posted at
Stockholm University
2014-02-02
Diariennr: SU FV-2.3.1.5-
0230-14
Administrator:
Cecilia Törnqvist

Union representatives are Anqi Lindblom-Ahlm (SACO), 08-1207 6298, Lisbeth Häggberg (Fackförbundet ST), tfn 08-16 2000 (vx), och Gunnar Stenberg (SEKO), tfn 070-316 43 41.

The application, quoting the ref.no SU FV-0230-14, should arrive no later than 15 March, 2014 by e-mail to registrator@su.se

Documents submitted electronically should be in Word or PDF format. **Note!** Please include the reference number **SU FV-0230-14** in the subject heading.

Tid och Plats: Den 3 februari 2014, kl. 13-16, T40, Geovetenskapens hus,
Stockholms universitet

På följande sida/or finns

Appendix 4c



Postdoktor i klimatmodellering

vid Meteorologiska institutionen och Bolincentret för klimatforskning.
Ref.nr SU FV-0230-13. Sista ansökningsdag: 2014-03-15.

Vid Meteorologiska institutionen på Stockholms universitet (www.misu.su.se) bedrivs forskning och undervisning i en internationell miljö med fyra huvudinriktningar: atmosfärfysik, dynamisk meteorologi, fysisk oceanografi och kemisk meteorologi. Forskningen i alla inriktningar har en stark koppling till klimatet och processer viktiga för klimatet och dess förändring. Omkring 80 personer arbetar vid institutionen varav ca 35 är forskare/lärare, 30 doktorander och 15 i den tekniska och administrativa personalen. Institutionen är en del av Bolincentret för klimatforskning (www.bbcc.su.se) där den tillsammans med tre andra institutioner bedriver forskning av de flesta aspekter viktiga för klimatsystemet.

Projektbeskrivning

Vi inbjuder kandidater att föreslå 2-åriga projekt inom klimatmodellering som kan genomföras inom Bolincentret. De föreslagna projekten ska handla om utveckling, utvärdering eller tillämpning av klimatmodeller avseende forskning inom något av följande delområden: (1) atmosfär- och/eller ocean-cirkulation, (2) representation av subgridskaleprocesser, (3) paleoklimatmodellering eller (4) klimatförändringar i Arktis. Bolincentret är involverad i utveckling och tillämpning av EC-Earth. Anställningen är placerade på Meteorologiska institutionen.

Bedömningsgrunder

Den sökande ska ha en doktorexamen i meteorologi, atmosfärvetenskap, oceanografi eller i annat relevant ämne. Den sökande ska ha utmärkta kunskaper i Engelska, både muntligt och skriftligt.

Anställningsvillkor

Anställningarna avser heltid och gäller tills vidare, dock längst två år, med möjlighet till förlängning om det finns särskilda skäl. Tillträde 2014-05-01 eller enligt överenskommelse.

Stockholms universitet strävar efter att vara en arbetsplats som är fri från diskriminering och ger lika möjligheter för alla.

Ansökan

Ansökan skall vara skriven på svenska eller engelska och innehålla, CV med publikationslista, kopia av bevis för doktorexamen, projektbilaga (på engelska, max 1 sida) samt kontaktinformation till två referenspersoner.

De sökande uppmanas att ta kontakt för att diskutera sin projektidé med någon forskare på institutionen, kontaktinfo hittas här: www.misu.su.se/list_MISU



STOCKHOLMS UNIVERSITET
**Meteorologiska institutionen och
Bolencentret för klimatforskning**

Anslaget vid

Stockholms universitet

2014-02-02

Diariernr: SU FV-2.3.1.5-0230-14

Handläggare: Cecilia Törnqvist



STOCKHOLMS UNIVERSITET
**Meteorologiska institutionen och
Bolencentret för klimatforskning**

Anslaget vid

Stockholms universitet

2014-02-02

Diariennr: SU FV-2.3.1.5-0230-14

Handläggare: Cecilia Törnqvist

Fackliga företrädare

Anqi Lindblom-Ahlm (SACO), 08-1207 6298, Lisbeth Häggberg (Fackförbundet ST), tfn 08-16 2000 (vx), och Gunnar Stenberg (SEKO), tfn 070-316 43 41.

Välkommen med din ansökan, märkt med ref.nr SU FV-0230-13, senast den 15 mars 2014 till registrator@su.se.

Handlingar som skickas elektroniskt bör vara i Word- eller pdf-format.
OBS! Ange referensnumret SU FV-0230-13 i ärenderaden.